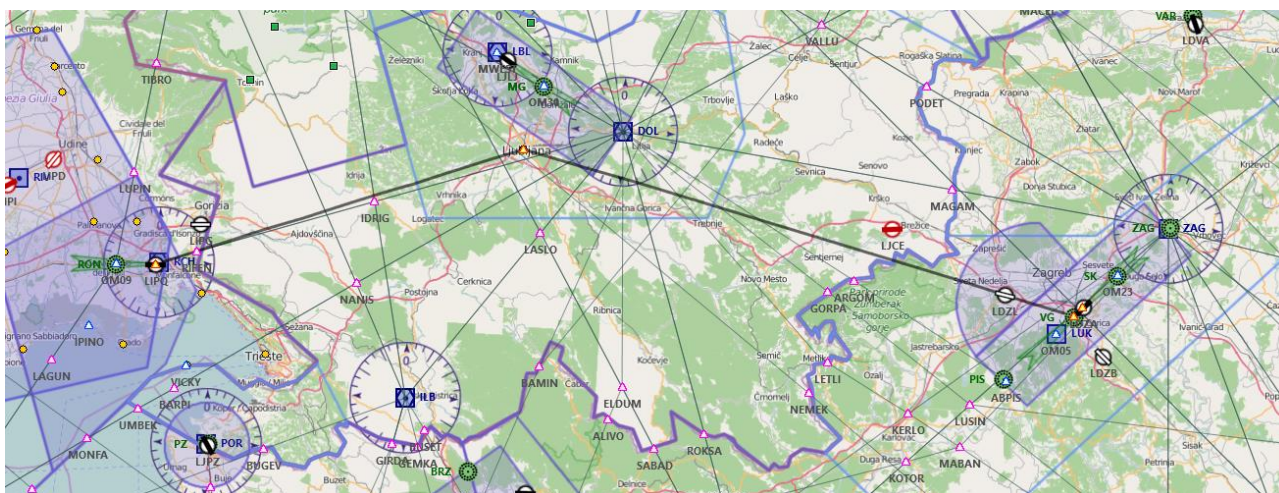


1^ TAPPA: TRIESTE (LIPQ) – ZAGABRIA (LDZA)

Piano volo:

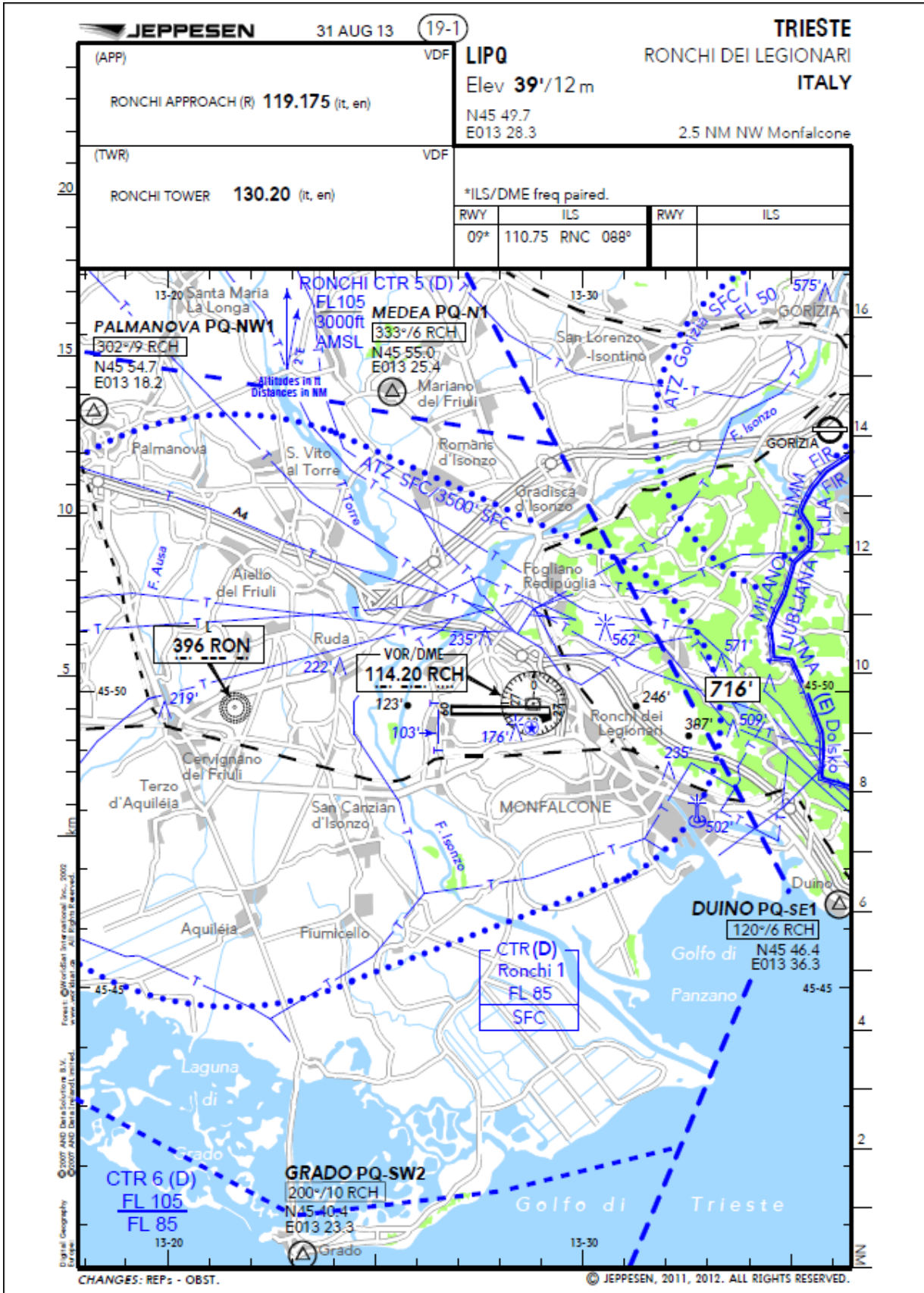


Waypoint	Descrizione	Prua °M	Ora	Dist (nm)	Rotta °M	Rotta °T	G/S (kts)
LIPQ	Ronchi Dei Legionari	358°	0	0	000°	000°	105
LUBIANA	Lubiana	070°	26	45,1	070°	072°	105
VG	VELIKA GORICA (325 KHz)	104°	38	67,2	104°	106°	105
LDZA	Pleso	044°	1	1,5	044°	047°	105

Breve descrizione del volo: Ci aspetterà un lungo tour attraverso l'Europa e passando da quante più capitali possibili !! Partiremo da Trieste, punto di arrivo del Giro d'Italia 2015 e ci dirigeremo verso la capitale della Slovenia: Lubiana e poi verso la capitale della Croazia: Zagabria.

Cartine

Trieste LIPQ



TRIESTE
RONCHI DEI LEGIONARI
ITALY

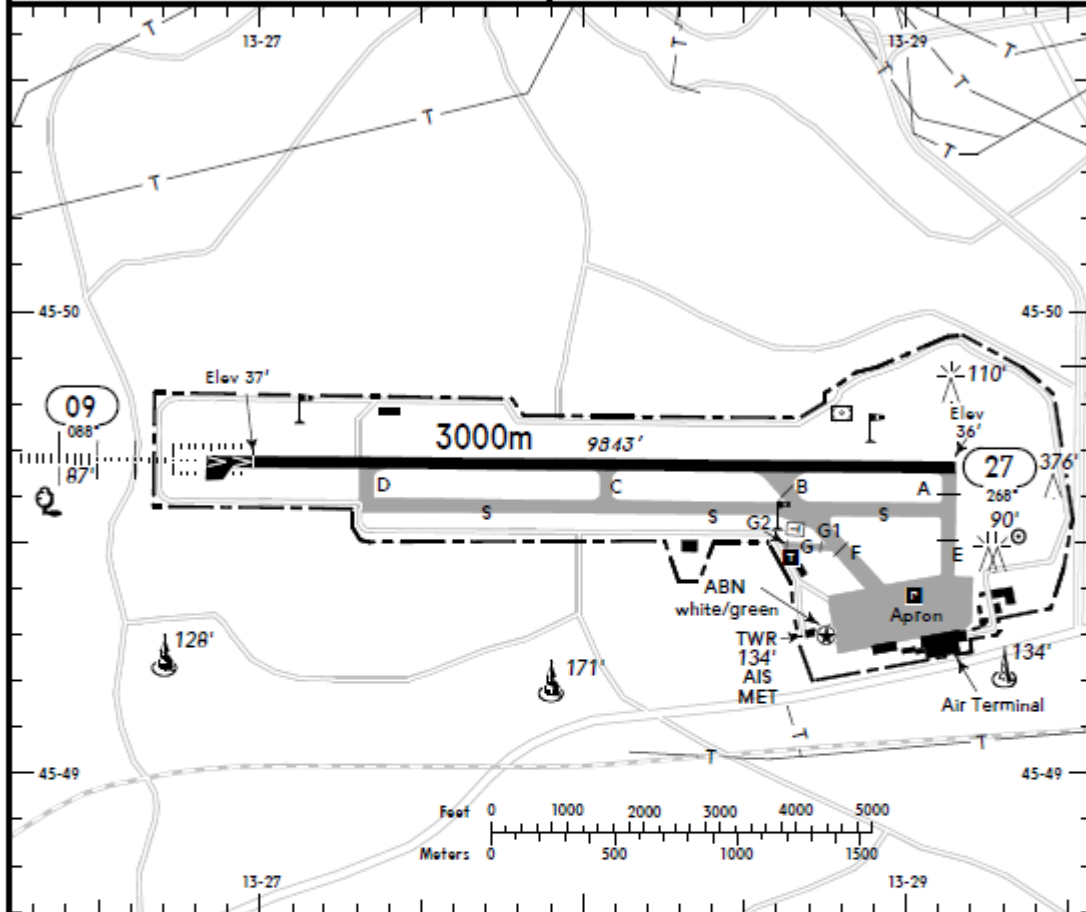
19-2 31 AUG 13

JEPPESEN



(FIS)

PADOVA INFORMATION **126.425 (124.150)**



X TAXI

ABN - ALS 09 - PAPI - THRL - RL - RCLL - TWYL - APRON - OBSTL.

RWY No	Dimension (m) - Surface	TORA (m)	LDA (m)	Strength	Lights
09	3000 x 45 Asphalt	3000	2800	PCN 90/F/A/W/T	☉
27		3000	3000		

● Heads concrete

NOTE:

See also TRIESTE 10-1V.

ACFT movement on apron authorised only with follow-me car assistance. Inbound ACFT must wait until follow-me car arrival on intersection between TWY and apron. Outbound ACFT must follow the follow-me car from their stand until beginning of TWY. Taxiing and parking with caution.

TWY 'E' will be preferably used to vacate apron, TWY 'B' to vacate RWY and TWY 'F' to enter apron.

Taxiing from TWY 'B' to TWY 'S' heading to THR 27 is without centre lights guidance.

TWY 'G' only usable SR-SS. In different hours movement allowed on tow only.

Priority for landing & parking ACFT (GA):

- First priority for home-based ACFT.
- Other ACFT will be accepted according to stands availability.

Anchorage for ACFT not AVBL.

Landing, take-off and taxiing with caution due to grass cutting on movement area.

Presence of men and equipment.

Zagabria LDZA

