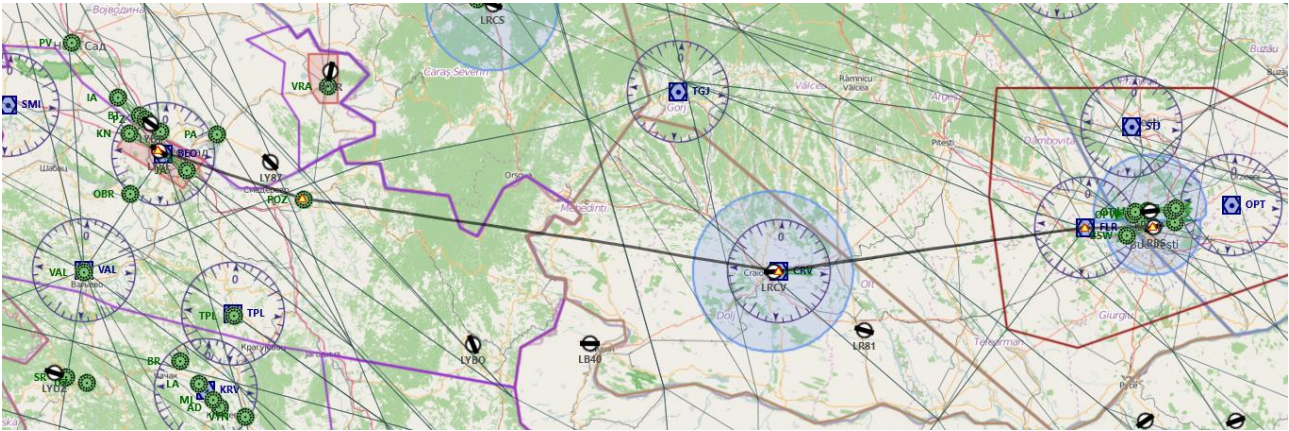


10^A TAPPA: BUCAREST (LRBS) – BELGRADO (LYBE)

Piano volo:



Waypoint	Descrizione	Prua °M	Ora	Dist (nm)	Rotta °M	Rotta °T
LRBS	Baneasa	355°	0	0	000°	000°
FLR	FLORESTI (112,2 MHz)	265°	8	16,9	265°	270°
CRV	CRAIOVA (110,2 MHz)	257°	39	77,3	257°	262°
POZ	POZAREVAC (416 KHz)	276°	60	120,2	276°	280°
LYBE	Belgrade	285°	19	37,8	285°	289°

Breve descrizione del volo: Voleremo dalla capitale della Romania fino alla capitale della Serbia: Belgrado. Tappa un po' lunghina.. consiglio di prendere aerei un po' più veloci dei soliti Cessna 172.

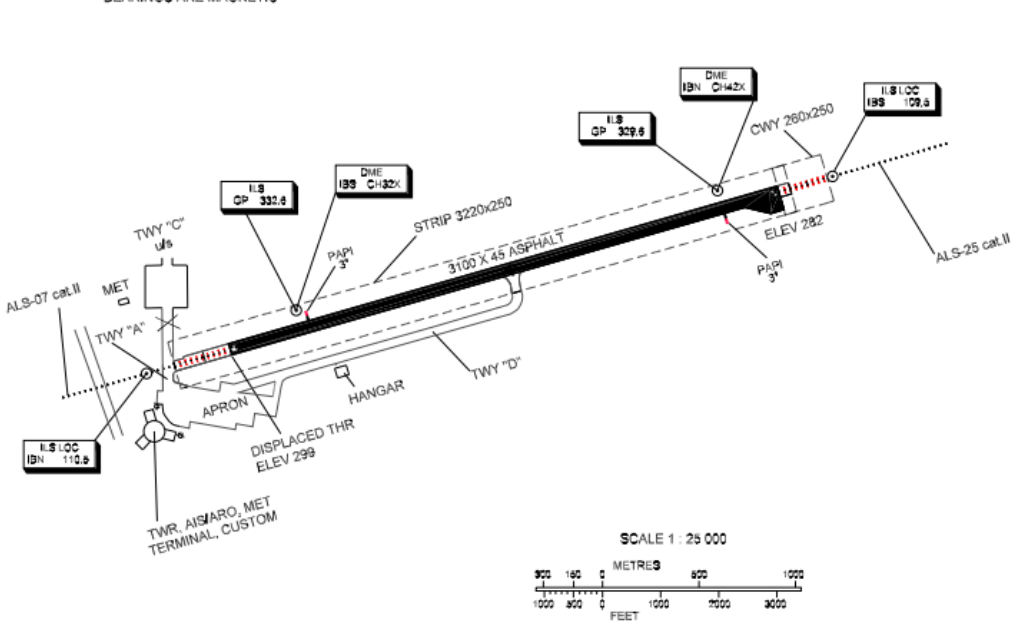
Cartine

Bucarest (LRBS)

Changes: RWY direction.

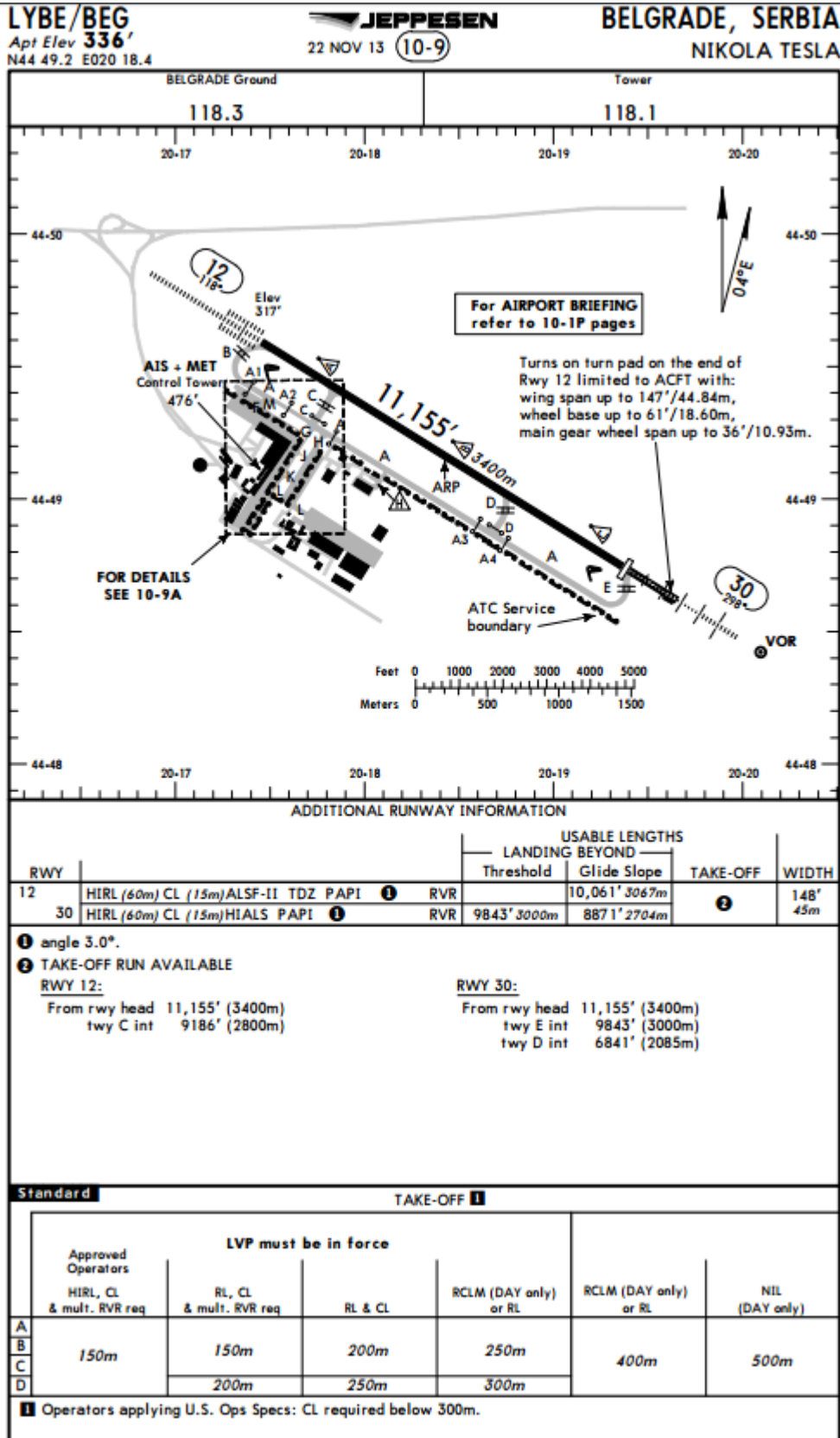
RWY	DIRECTION	THR	BEARING STRENGTH
07	066°	44°29'59.28"N 028°03'08.87"E	PCN 64/R/D/W/T ASPHALT
25	248°	44°30'25.81"N 028°07'17.21"E	

ELEVATIONS IN FEET
DIMENSIONS IN METRES
BEARINGS ARE MAGNETIC



AERODROME CHART - ICAO
ELEV 299 FT
44° 30' 13" N
026° 09' 13" E
TWR 120.8
GND 123.95
BUCURESTI
Banesta-Aurel Vlaicu (LRBS)

Belgrado (LYBE)



CHANGES: Apron. Twy M established.

© JEPPESEN, 2002, 2013. ALL RIGHTS RESERVED.