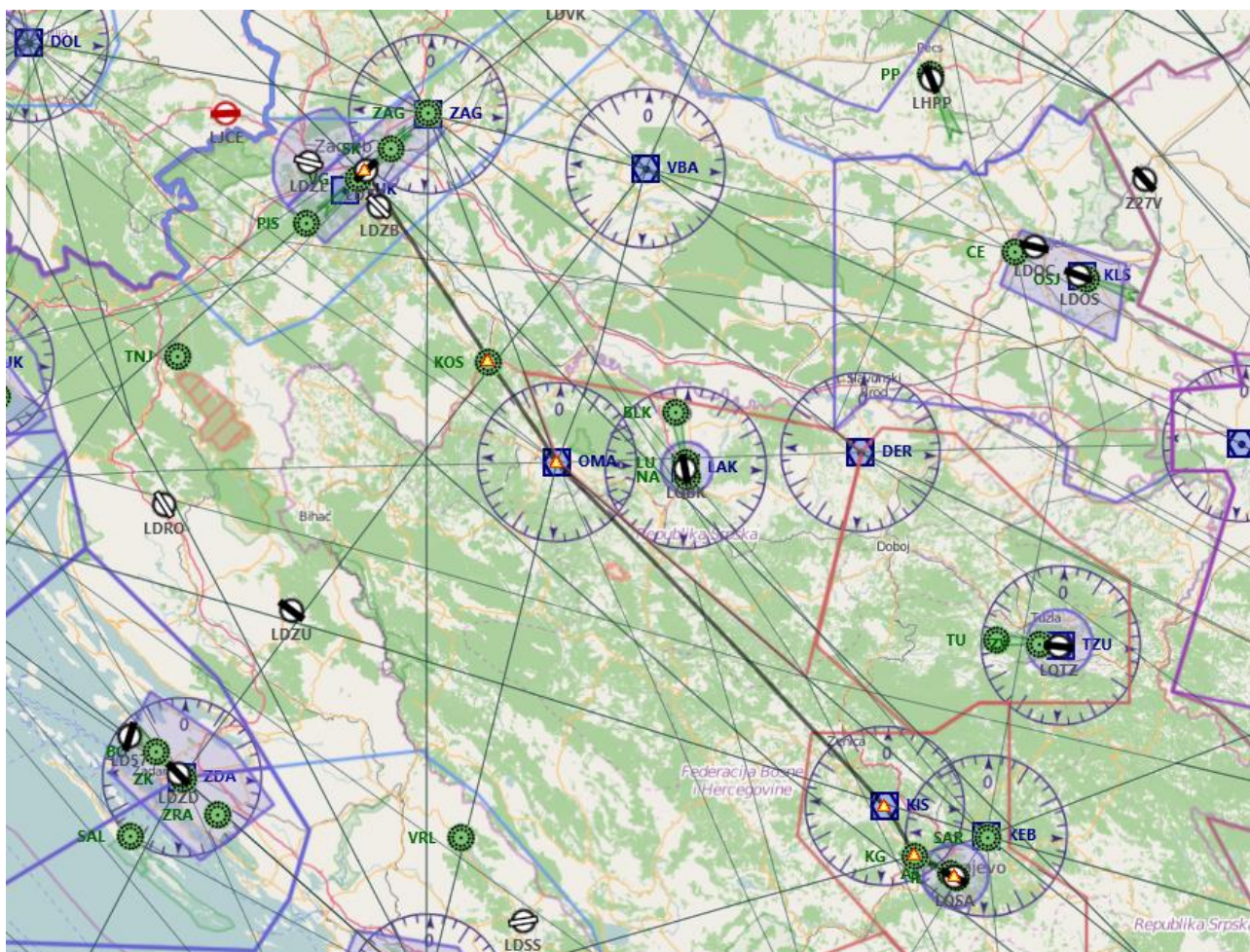


2^ TAPPA: ZAGABRIA (LDZA) – SARAJEVO (LQSA)

Piano volo:

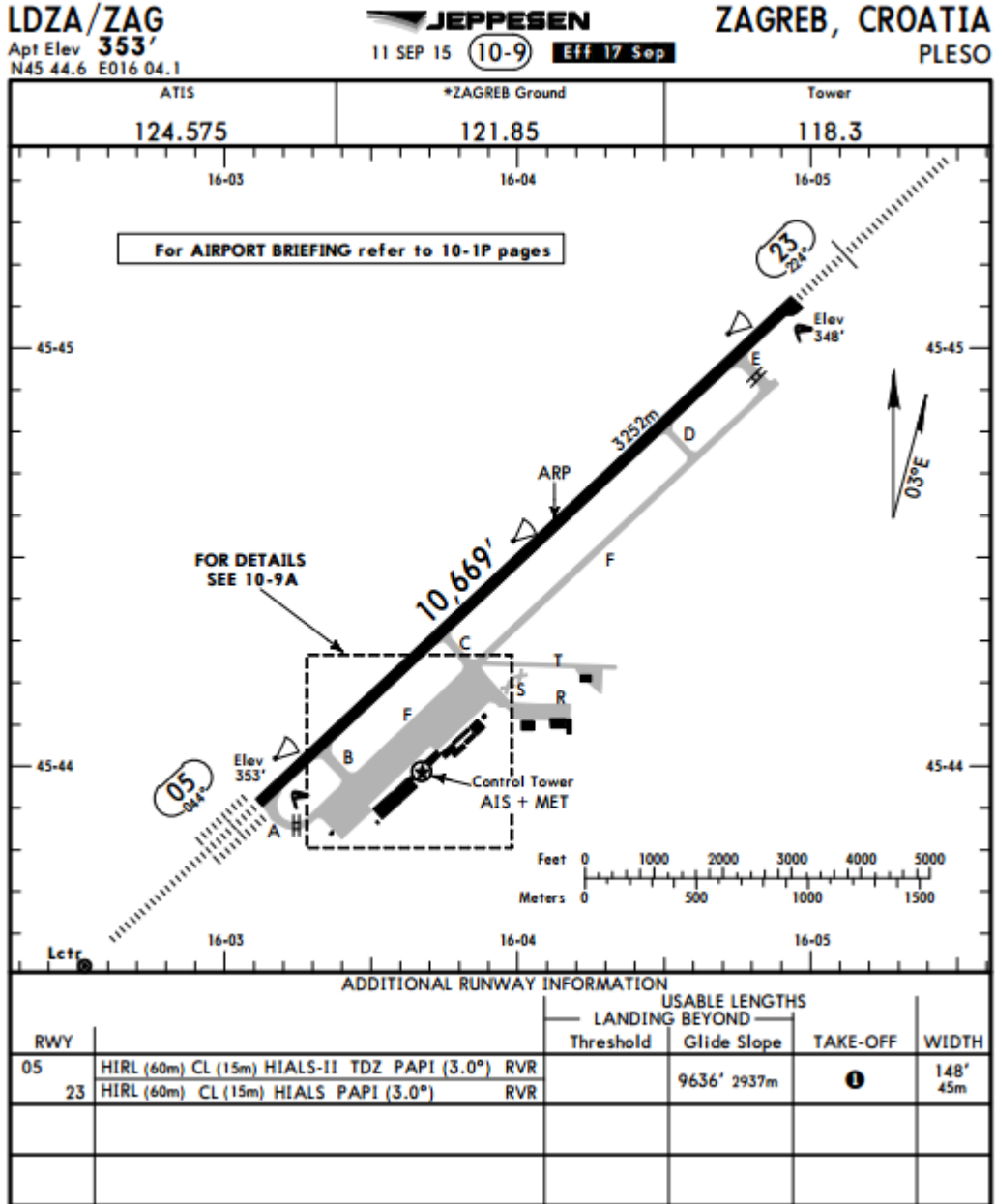


Waypoint	Descrizione	Prua °M	Ora	Dist (nm)	Rotta °M	Rotta °T	G/S (kts)
LDZA	Pleso	357°	0	0	000°	000°	110
KOS	KOSTAJNICA (316 KHz)	144°	20	36,5	144°	147°	110
OMA	OMARSKA (117,9 MHz)	146°	11	19,9	146°	146°	110
KIS	SARAJEVO (116 MHz)	133°	43	78	133°	136°	110
KG	KOBILJACA (SARAJEVO) (357,5 KHz)	146°	5	9,6	146°	149°	110
LQSA	Sarajevo	115°	4	7,5	115°	117°	110

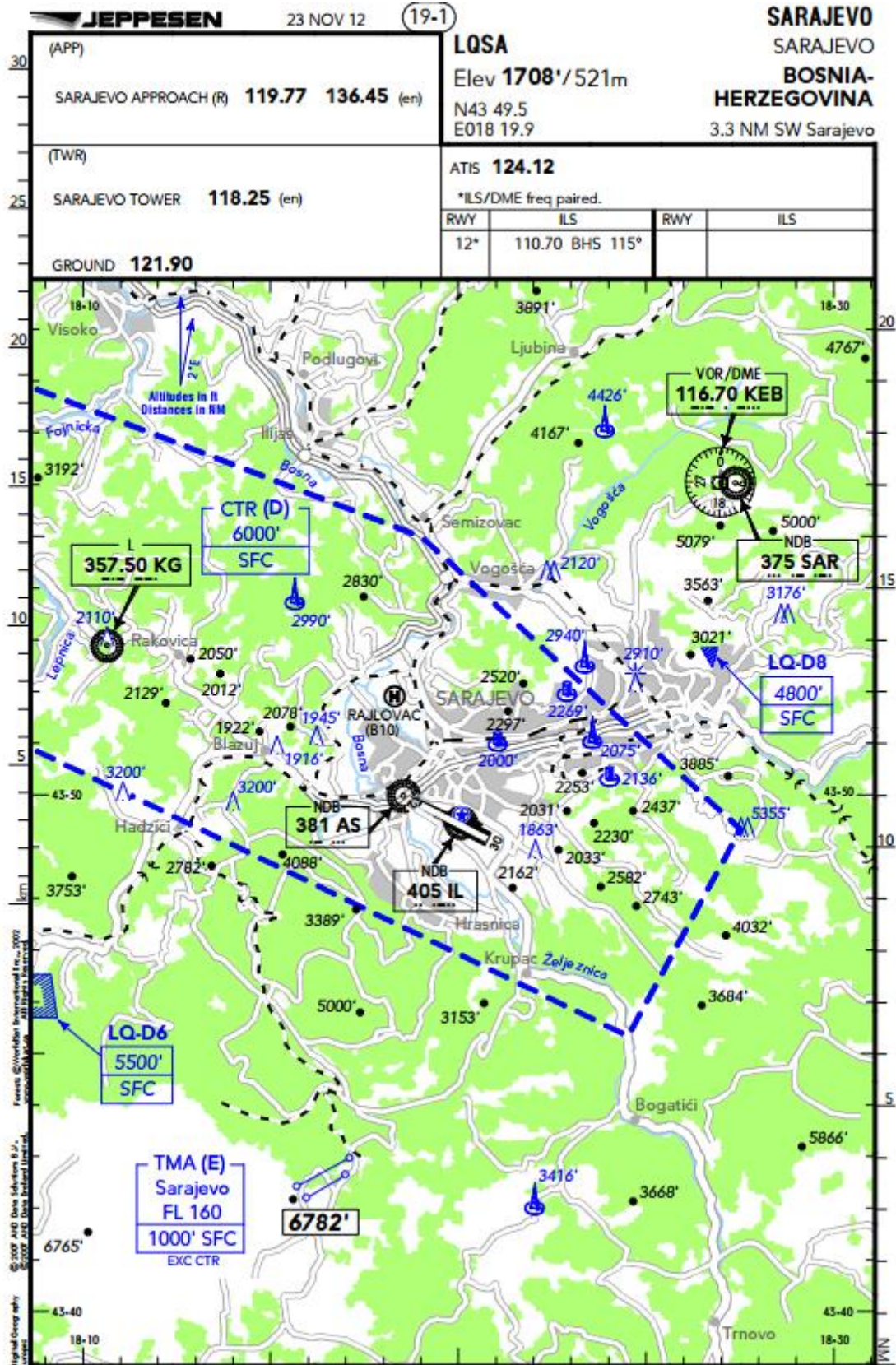
Breve descrizione del volo: Dalla capitale della Croazia voleremo fino alla capitale della Bosnia ed Erzegovina: Sarajevo. Seguiremo prevalentemente radioaiuti e ci affideremo alla bussola e all'orologio.

Cartine

Zagabria LDZA



Sarajevo LQSA



SARAJEVO

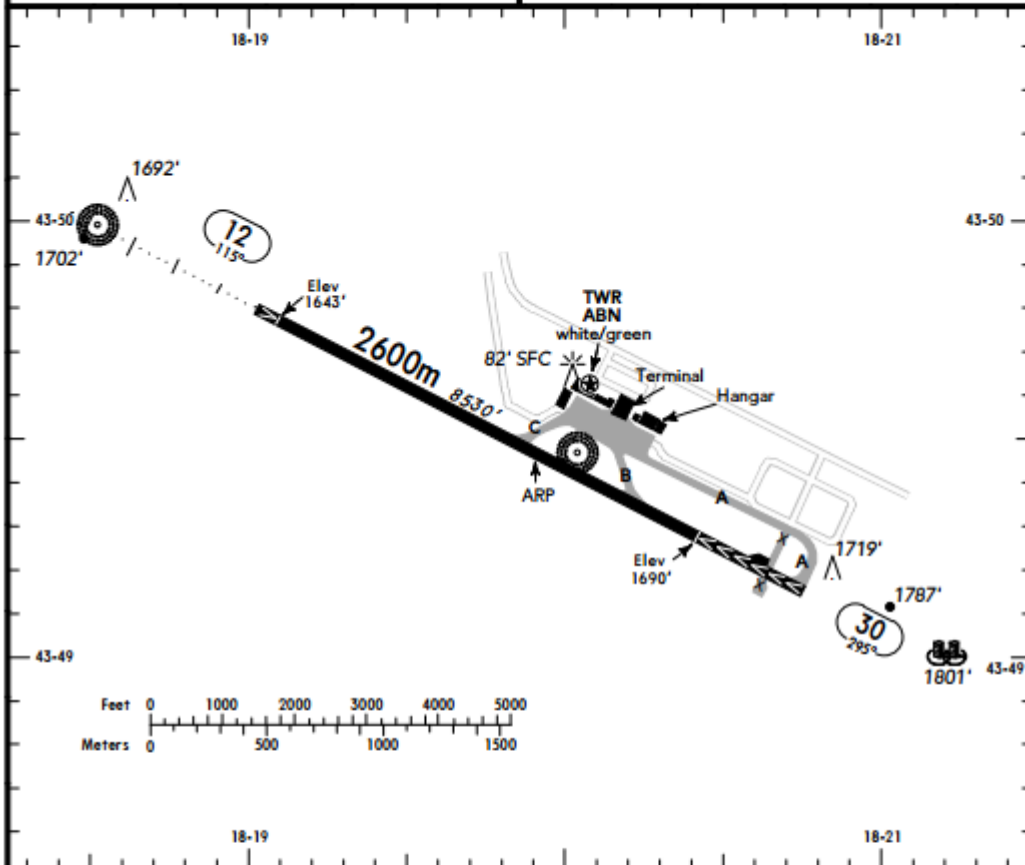
(19-2) 23 NOV 12

JEPPESEN

SARAJEVO

BOSNIA-HERZEGOVINA

ATIS **124.12**
SARAJEVO GROUND **121.90**



✕ (O/R) (O/R) TAXI

ABN - ALS 12 - PAPI 12 (3.2°) - THRL 12 - RL - RCLL - TWYL - APRON.

RWY No	Dimension (m) - Surface	TORA (m)	LDA (m)	Strength	Lights
12	2600 x 45 Asphalt	2600	2500	PCN 70/F/C/W/T	☉
30		2600	2100		

☉ anti-skid layer

CAUTION:
Bird concentration on and in the vicinity of RWY.

Ground Movements

ACFT movements on the apron must only be carried out according to the directions of the marshaller. Only one ACFT movement on the apron at the time is allowed, including ACFT in push-back procedure.
Entry to RWY 30 is permitted only via TWY A. The holding position to be used for RWY 30 is holding position on TWY A.

HEL Operations

No designated HEL LDG area. LDG instruction by ATC.
All rotary-wing ACFT will be treated as fixed-wing operations and will be instructed to land and take-off on a RWY. HEL unable to ground taxi will be escorted by follow-me car whilst in the hover.