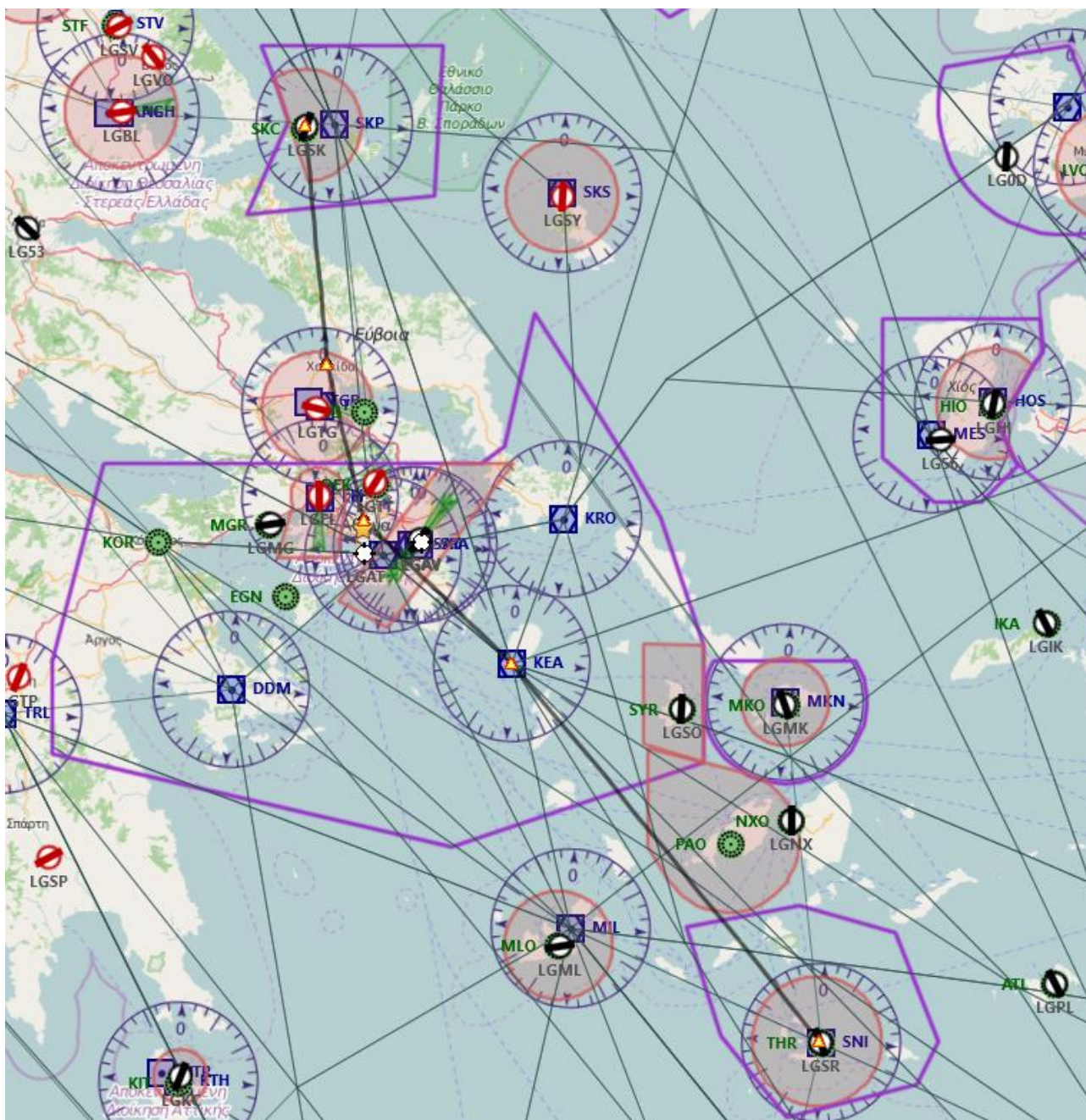


6^ TAPPA: SKIATHOS (LGSK) – SANTORINI (LGSR)

Piano volo:

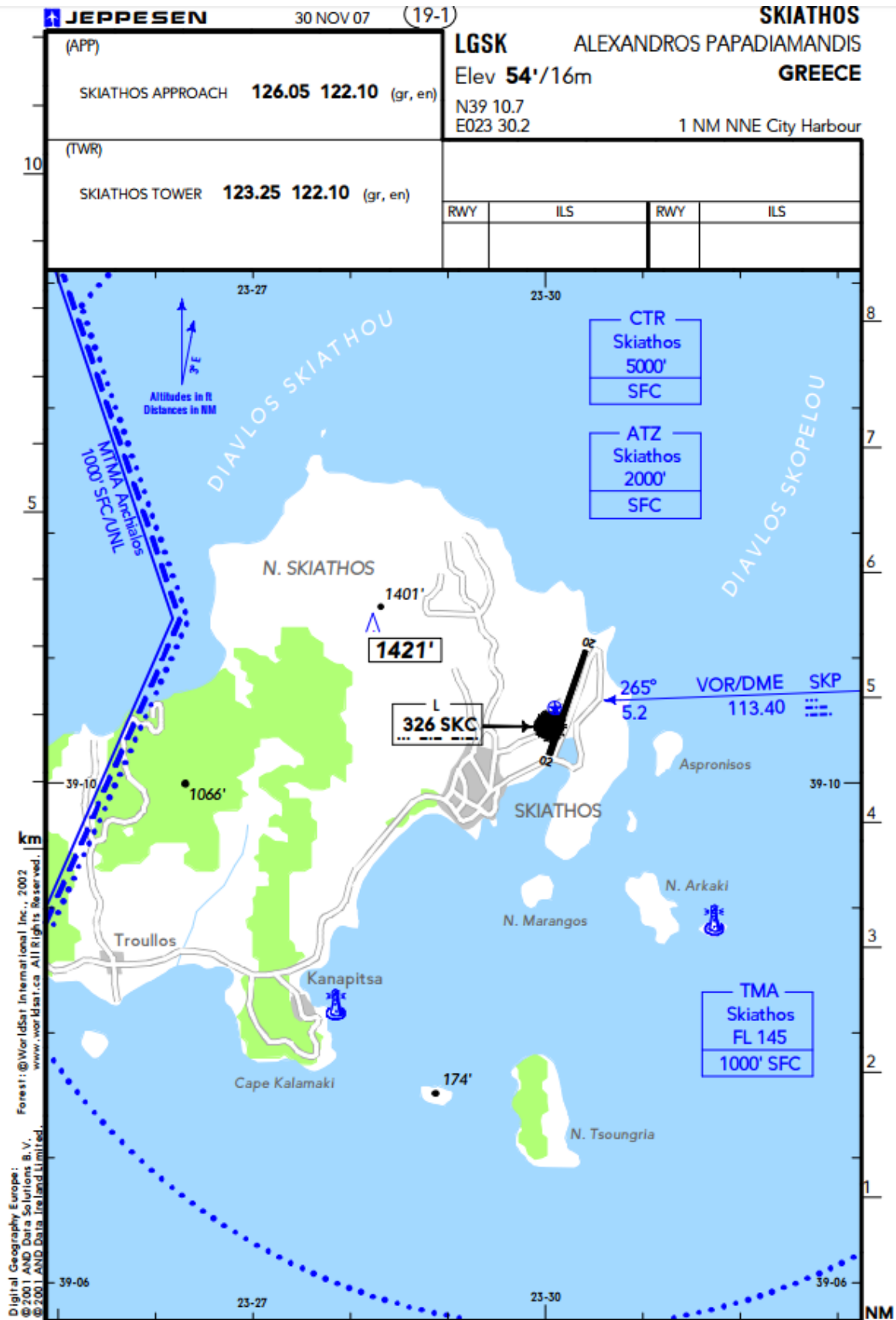


Waypoint	Descrizione	Prua °M	Ora	Dist (nm)	Rotta °M	Rotta °T	G/S (kts)
LGSK	Alexandros Papadiamandis	356°	0	0	000°	000°	110
	Chalcis	171°	23	43	171°	175°	110
	Atene	164°	16	29,2	164°	167°	110
KEA	KEA (115 MHz)	130°	20	37,5	130°	134°	110
LGSR	Santorini	136°	49	89,6	136°	140°	110

Breve descrizione del volo: Tappa un po' lunghetta ma divertente: voleremo da Skiathos a Santorini passando da Atene e da numerose isolette del Mar Egeo. Il Touch & Go nelle isole vicino al percorso è a discrezione 😊

Cartine

Skiathos LGSK



SKIATHOS

(19-2) 30 NOV 07



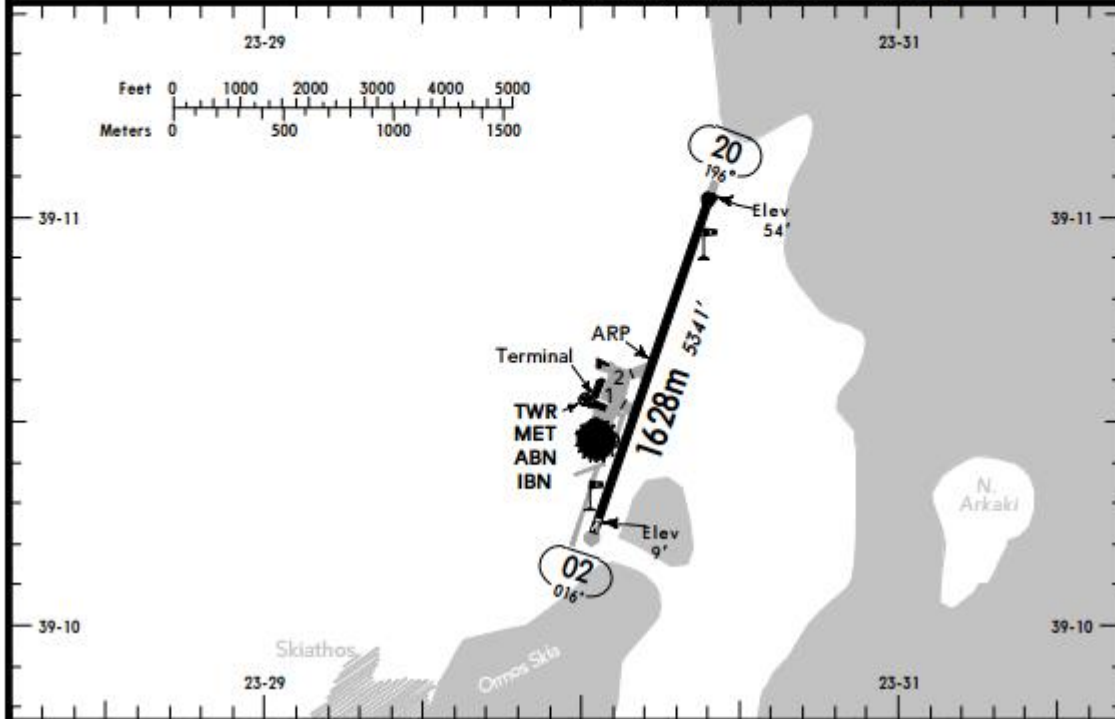
ALEXANDROS PAPADIAMANDIS

GREECE



(FIS)

MAKEDONIA INFORMATION **130.92**



ABN - IBN - PAPI 02 (3.3°), 20 (3°) - THRL - RL - TWYL - APRON - OBSTL.

RWY No	Dimension (m) - Surface	TORA (m)	LDA (m)	Strength	Lights
02	1628 x 30 Asphalt	1628	1570	PCN 42/F/D/X/U	
20		1628	1628		

Due to limited parking space PNR by phone for all private flights before departing from origin AD.

Except of a different instruction all ACFT taxiing must make turning circle at both RWY ends.

ACFT taxiing on turning circle at the beginning of RWY 02 must make a clockwise turn with low engine power.

Caution

ACFT should taxi with reduced power when entering or leaving apron.

A part of THR 20 is not visible from TWR.

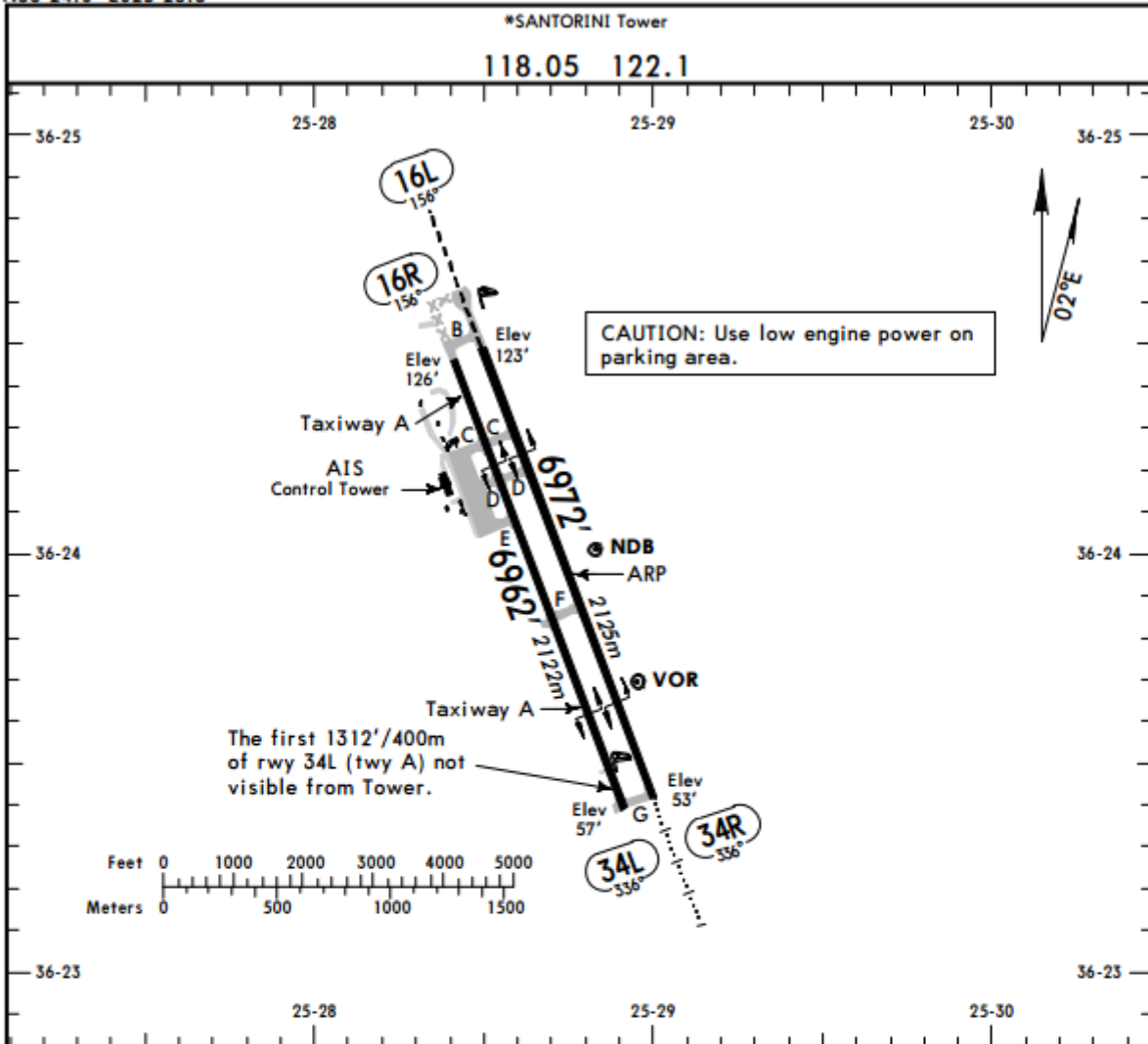
Seagulls appear in the vicinity of the AD throughout the year.

Santorini LGSR

LGSR/JTR
Apt Elev 123'
N36 24.0 E025 28.8

JEPPESEN
24 MAR 06 (13-1)

SANTORINI, GREECE
SANTORINI



ADDITIONAL RUNWAY INFORMATION

RWY	USABLE LENGTHS				WIDTH
	Threshold	LANDING	BEYOND Glide Slope	TAKE-OFF	
16L	MIRL	REIL	PAPI-L (angle 3.02°)	RVR	98'
34R	MIRL	HIALS	PAPI-L (angle 2.95°)	RVR	30m
16R ① 34L	MIRL				98'
					30m

① Marked and lighted as rwy, but primarily used as twy A.