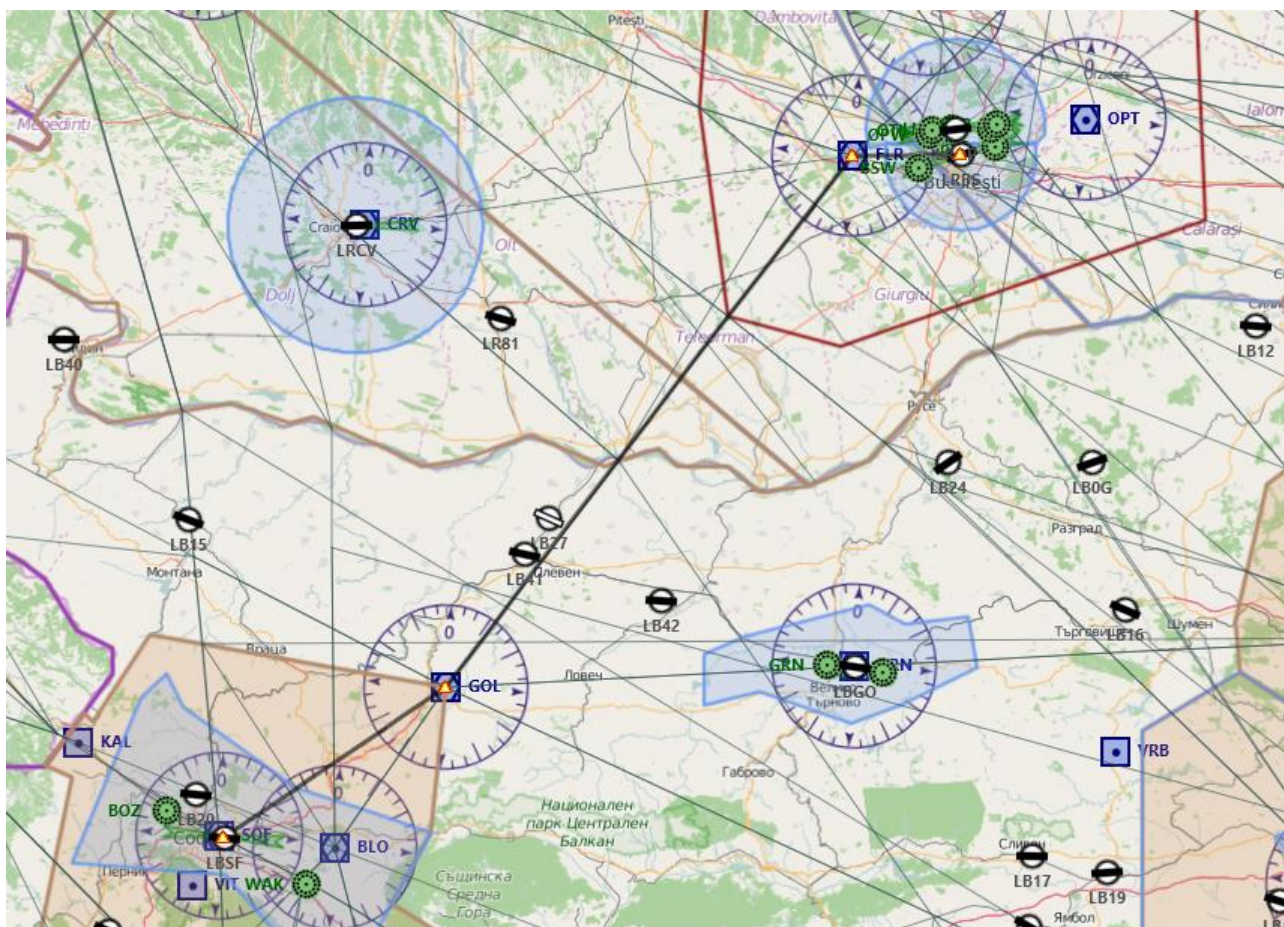


9ª TAPPA: SOFIA (LBSF) – BUCAREST (LRBS)

Piano volo:



Waypoint	Descrizione	Prua °M	Ora	Dist (nm)	Rotta °M	Rotta °T	G/S (kts)
LBSF	Sofia	357°	0	0	000°	000°	120
GOL	GOLYAMA (114,1 MHz)	053°	22	43	053°	056°	120
FLR	FLORESTI (112,2 MHz)	033°	53	106,1	033°	037°	120
LRBS	Baneasa	084°	8	16,9	084°	089°	120

Breve descrizione del volo: Voleremo dalla capitale della Bulgaria alla capitale della Romania sempre sui nostri aerei di Aviazione Generale. Durata prevista del volo: circa 1h20min

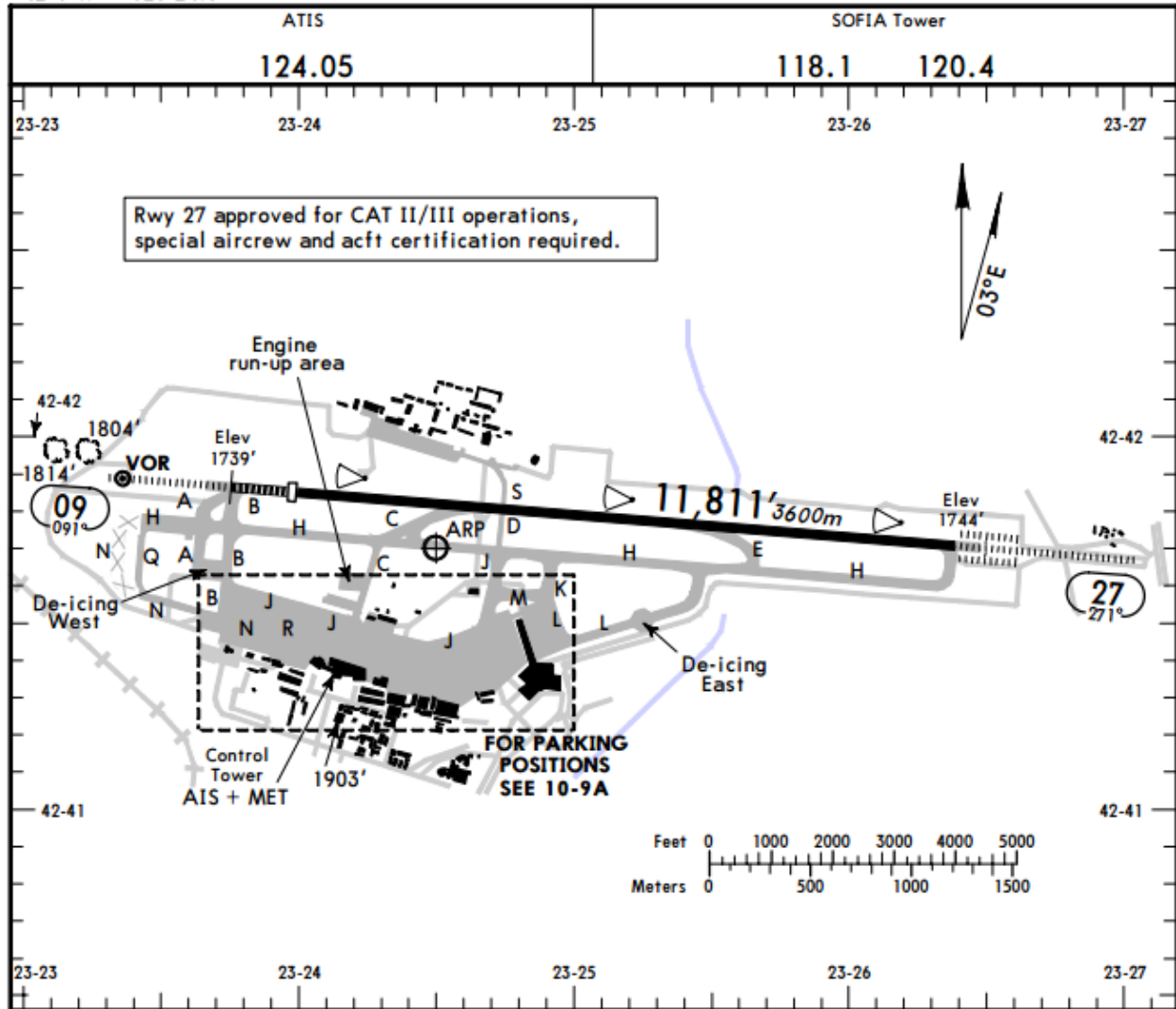
Cartine

Sofia LBSF

LBSF/SOF
 Apt Elev **1742'**
 N42 41.7 E023 24.5

JEPPESEN
 14 SEP 07 **(10-9)** Eff 27 Sep

SOFIA, BULGARIA
 SOFIA



ADDITIONAL RUNWAY INFORMATION

RWY		USABLE LENGTHS				WIDTH
		LANDING BEYOND		TAKE-OFF		
		Threshold	Glide Slope			
09	HIRL (60m) CL (15m) HIALS PAPI-R (3.0°)	RVR	10,827' 3300m	9794' 2985m	②	148' 45m
27	HIRL (60m) CL (15m) HIALS-II SFL TDZ ①	RVR		10,717' 3267m		

① PAPI-L (3.0°)

② TAKE-OFF RUN AVAILABLE

RWY 09:

From rwy head 11,811' (3600m)
 twy C int 8038' (2450m)

Bucarest (LRBS)