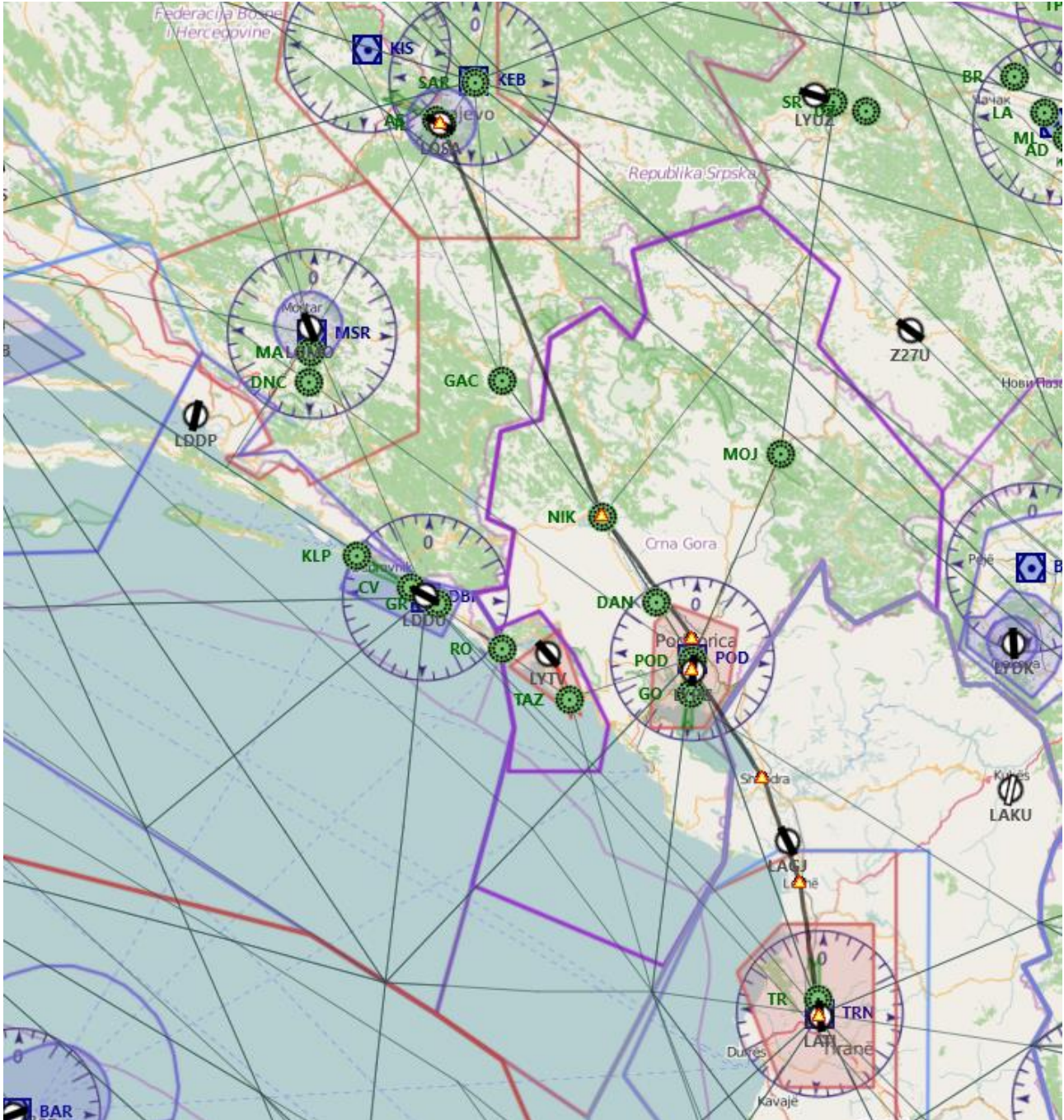


3^a TAPPA: SARAJEVO (LQSA) – TIRANA (LATI)

Piano volo:

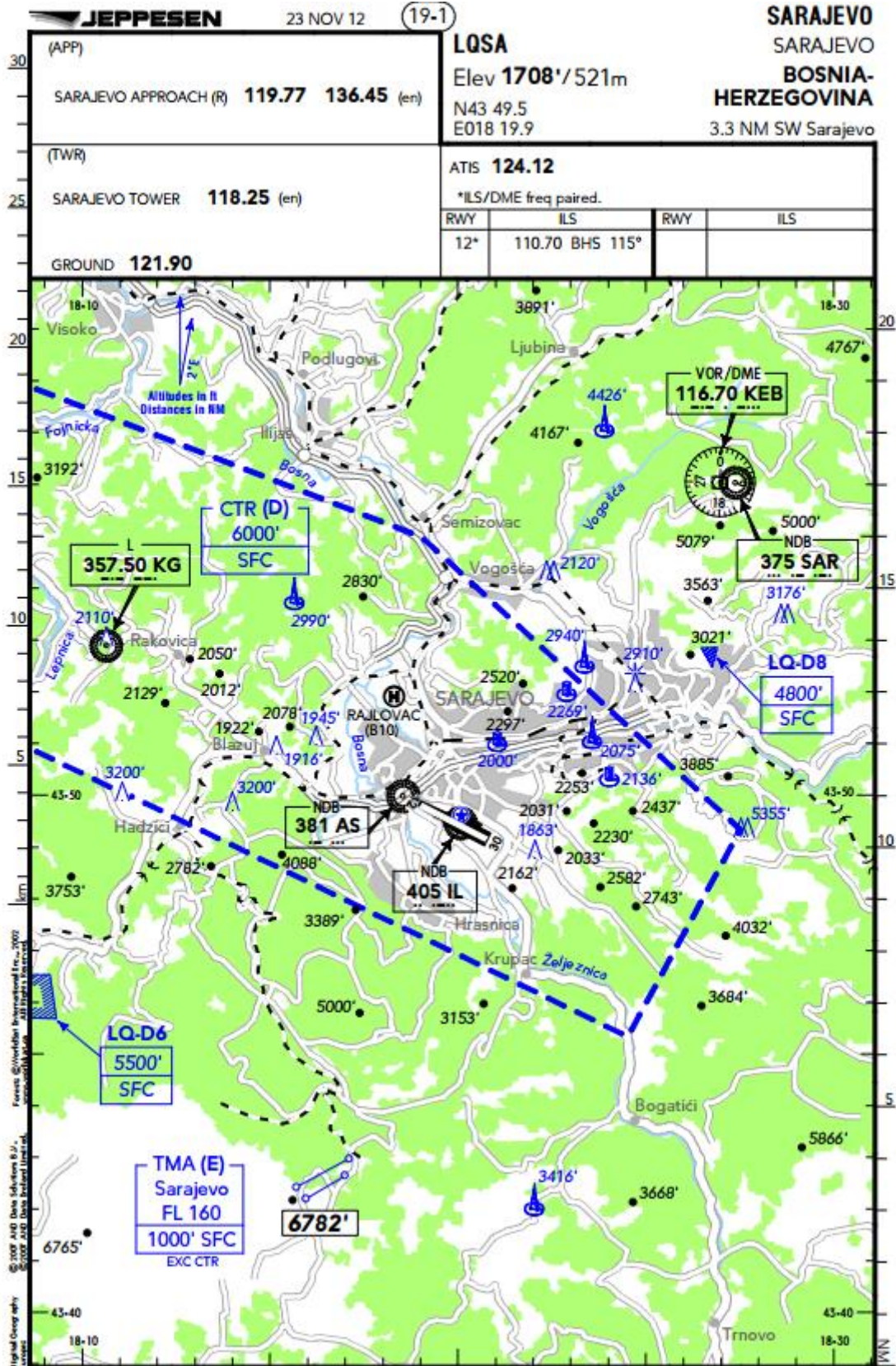


Waypoint	Descrizione	Prua °M	Ora	Dist (nm)	Rotta °M	Rotta °T	G/S (kts)
LQSA	Sarajevo	358°	0	0	000°	000°	110
NIK	NIKSIC (302 KHz)	155°	37	68	155°	157°	110
	Podroica	140°	13	24,6	140°	144°	110
LYPG	Podgorica	177°	3	5,2	177°	180°	110
	Shkodra	143°	12	21,1	143°	147°	110
	Lezhe	158°	10	18,1	158°	161°	110
LATI	Tirana	169°	12	22,3	169°	171°	110

Breve descrizione del volo: Dalla Capitale della Bosnia Erzegovina ci spostiamo un po' verso sud raggiungendo Tirana, la capitale dell'Albania. Passeremo da Podroica, capitale del Montenegro dove effettueremo un Touch&Go.

Cartine

Sarajevo LQSA



SARAJEVO

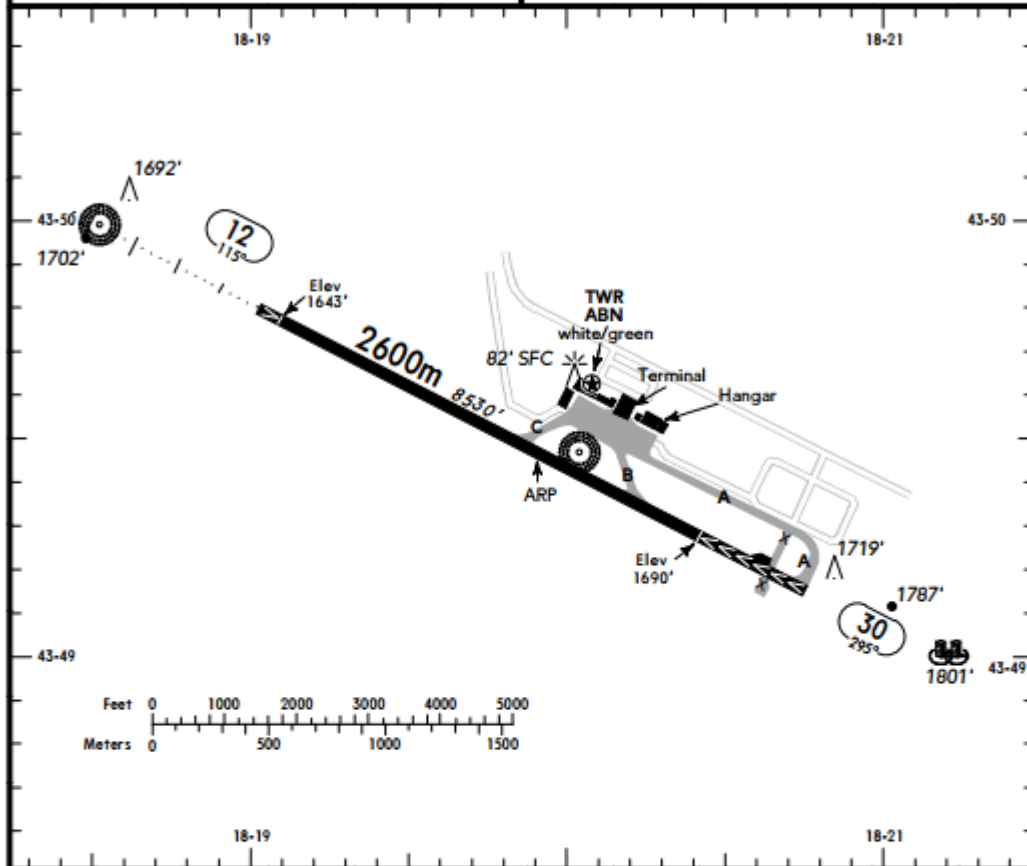
(19-2) 23 NOV 12

JEPPESEN

SARAJEVO

BOSNIA-HERZEGOVINA

ATIS **124.12**
SARAJEVO GROUND **121.90**



✕ (O/R) 🚗 (O/R) TAXI 🚗

📡 ABN - ALS 12 - PAPI 12 (3.2°) - THRL 12 - RL - RCLL - TWYL - APRON.

RWY No	Dimension (m) • Surface	TORA (m)	LDA (m)	Strength	Lights
12	2600 x 45 Asphalt	2600	2500	PCN 70/F/C/W/T	📡
30	2600 x 45 Asphalt	2600	2100	PCN 70/F/C/W/T	📡

📡 anti-skid layer

CAUTION:
Bird concentration on and in the vicinity of RWY.

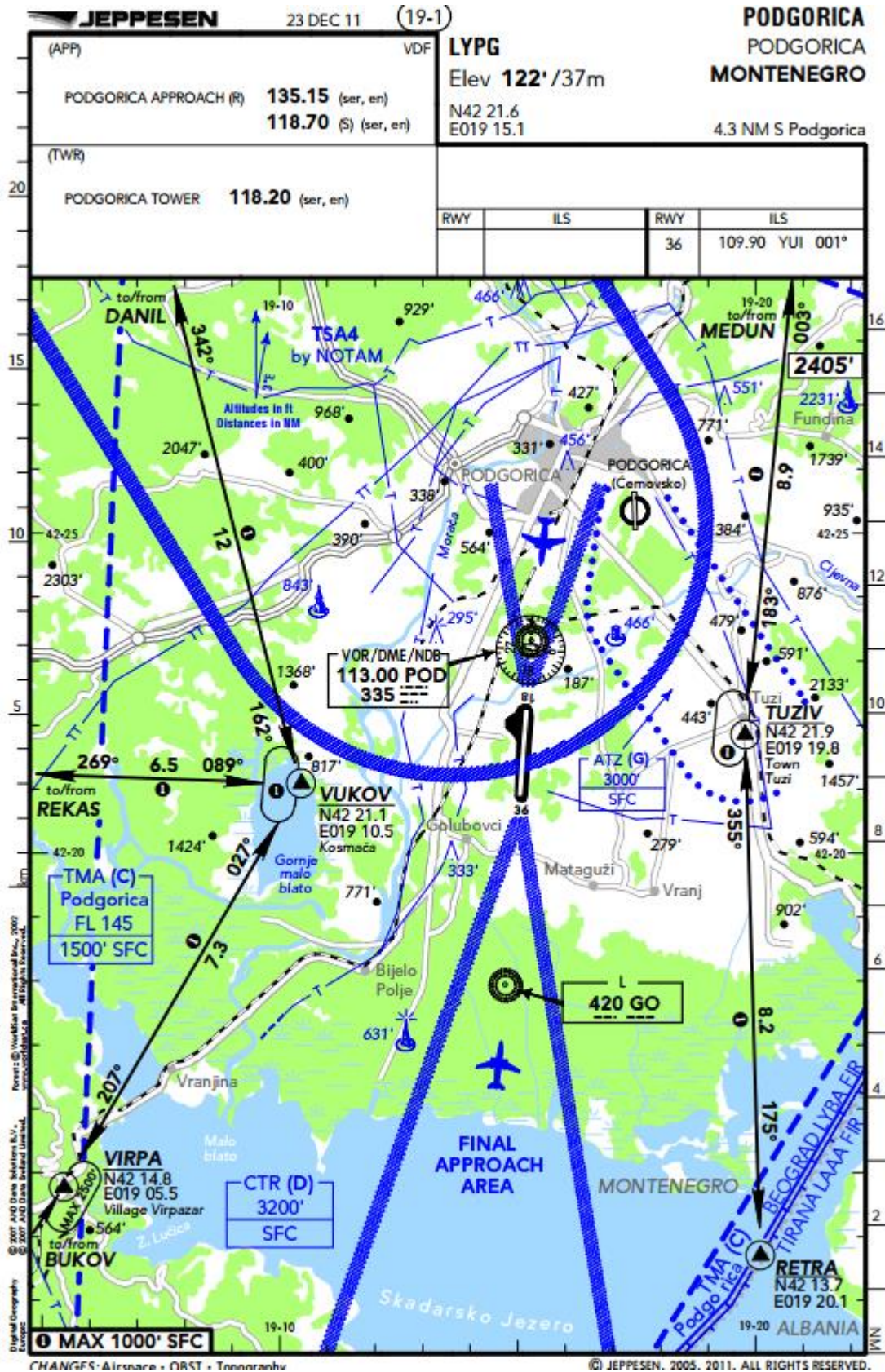
Ground Movements

ACFT movements on the apron must only be carried out according to the directions of the marshaller. Only one ACFT movement on the apron at the time is allowed, including ACFT in push-back procedure.
Entry to RWY 30 is permitted only via TWY A. The holding position to be used for RWY 30 is holding position on TWY A.

HEL Operations

No designated HEL LDG area. LDG instruction by ATC.
All rotary-wing ACFT will be treated as fixed-wing operations and will be instructed to land and take-off on a RWY. HEL unable to ground taxi will be escorted by follow-me car whilst in the hover.

Podroica LYPG



PODGORICA

PODGORICA

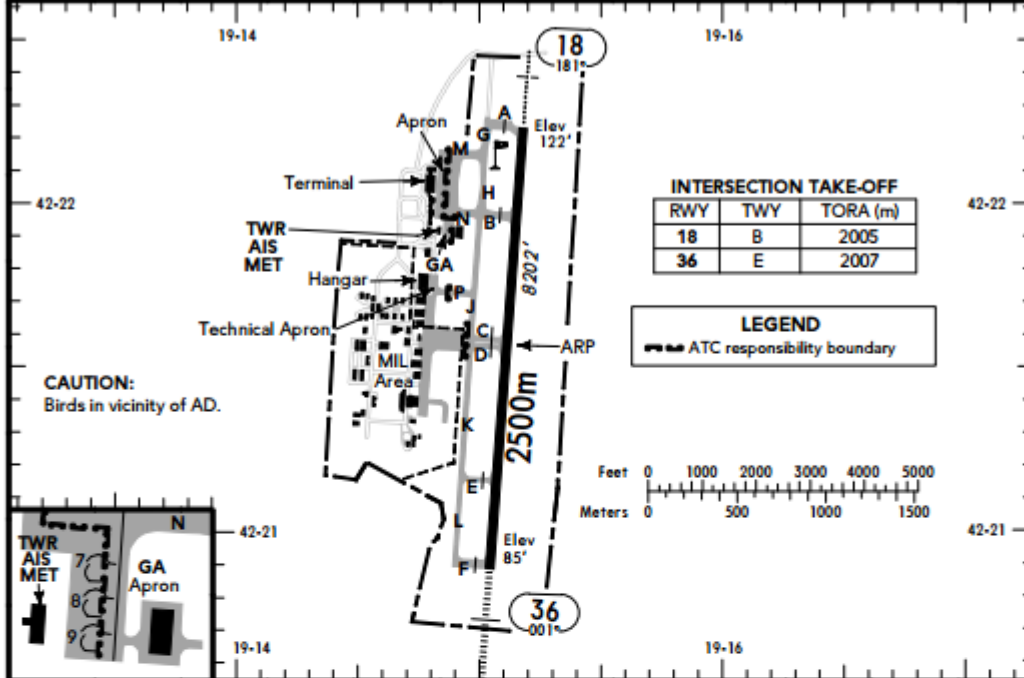
MONTENEGRO

19-2 23 DEC 11



(FIS)

PODGORICA APPROACH (R) **135.15**



NOTE: See also PODGORICA 10-1V.

Departures

VFR flights shall be planned according to VFR routes and comply with instructions and clearances given by PODGORICA TWR.

Arrivals

VFR flights shall be conducted along the routes from REPs RISAN, NIKSA, PERDO, LISIN, VAGAN and RETRA, where further instructions are received from PODGORICA APP, to holding points at VUKOV and TUZIV, where instructions and landing clearance will be given by PODGORICA TWR.

REPs VAGAN, DANIL, OBODA, PERDO and LISIN are holding points, where pilots have to wait for instructions for APCH from PODGORICA APP, if instructions have no been provided earlier.

COM Failure

If ACFT is equipped with transponder, the pilot shall squawk SSR code A7600, and
 - if cleared before to enter the CTR, continue the flight according to given clearance.

If landing clearance not included, the pilot should hold at holding points VUKOV or TUZIV observing traffic and awaiting light signals from Podgorica TWR.

- if communication has failed before receiving clearance to enter CTR, the pilot should continue flight at 500' SFC along routes to holding points VUKOV or TUZIV observing traffic and awaiting light signals from Podgorica TWR.

HEL

RWY is used for TKOF & LDG.

CAUTION:

State border to Albania approximate 7 NM SE of AD.

