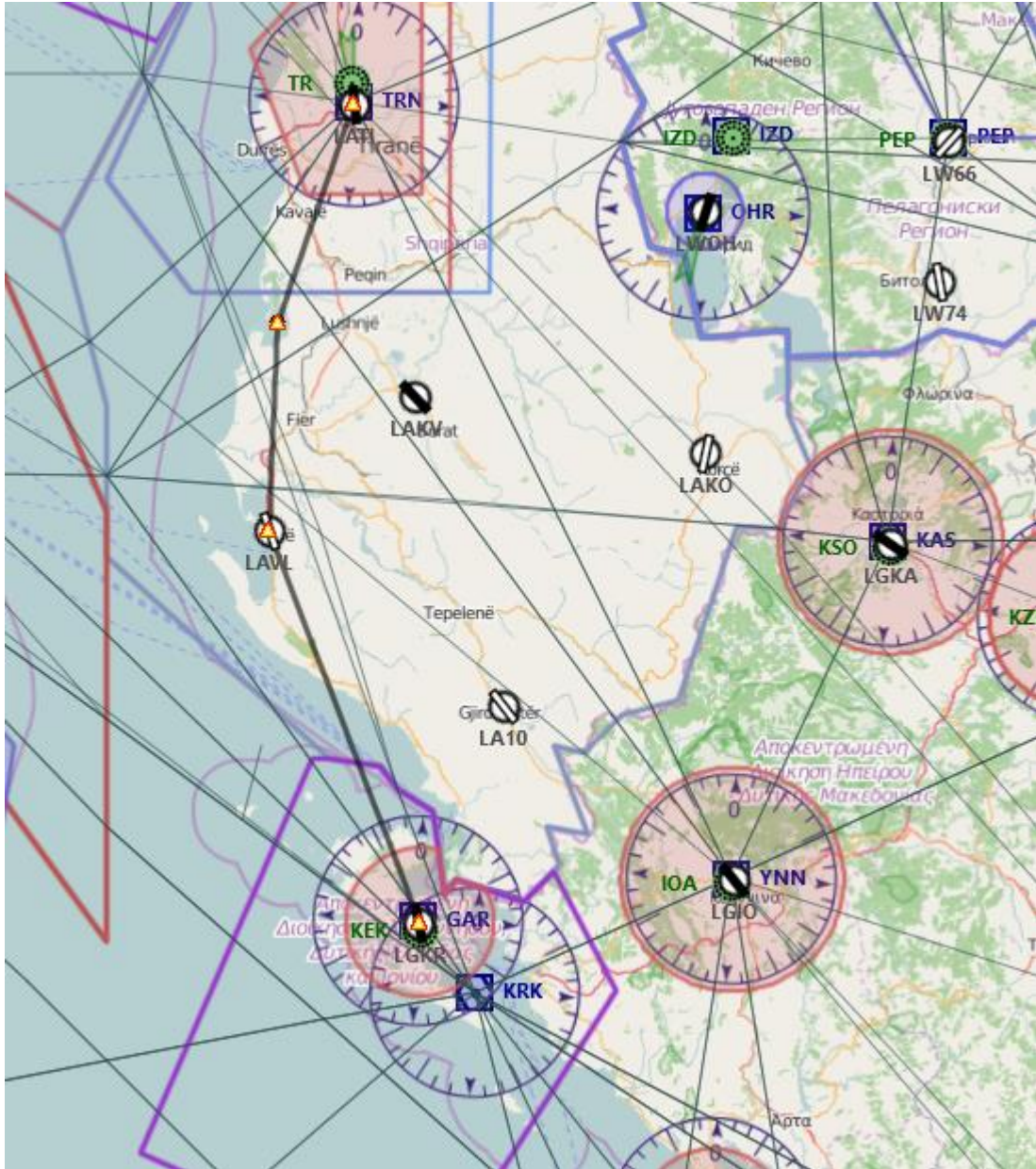


4^ TAPPA: TIRANA (LATI) – IOANNIS KAPODISTRIAS (LGKR)

Piano volo:

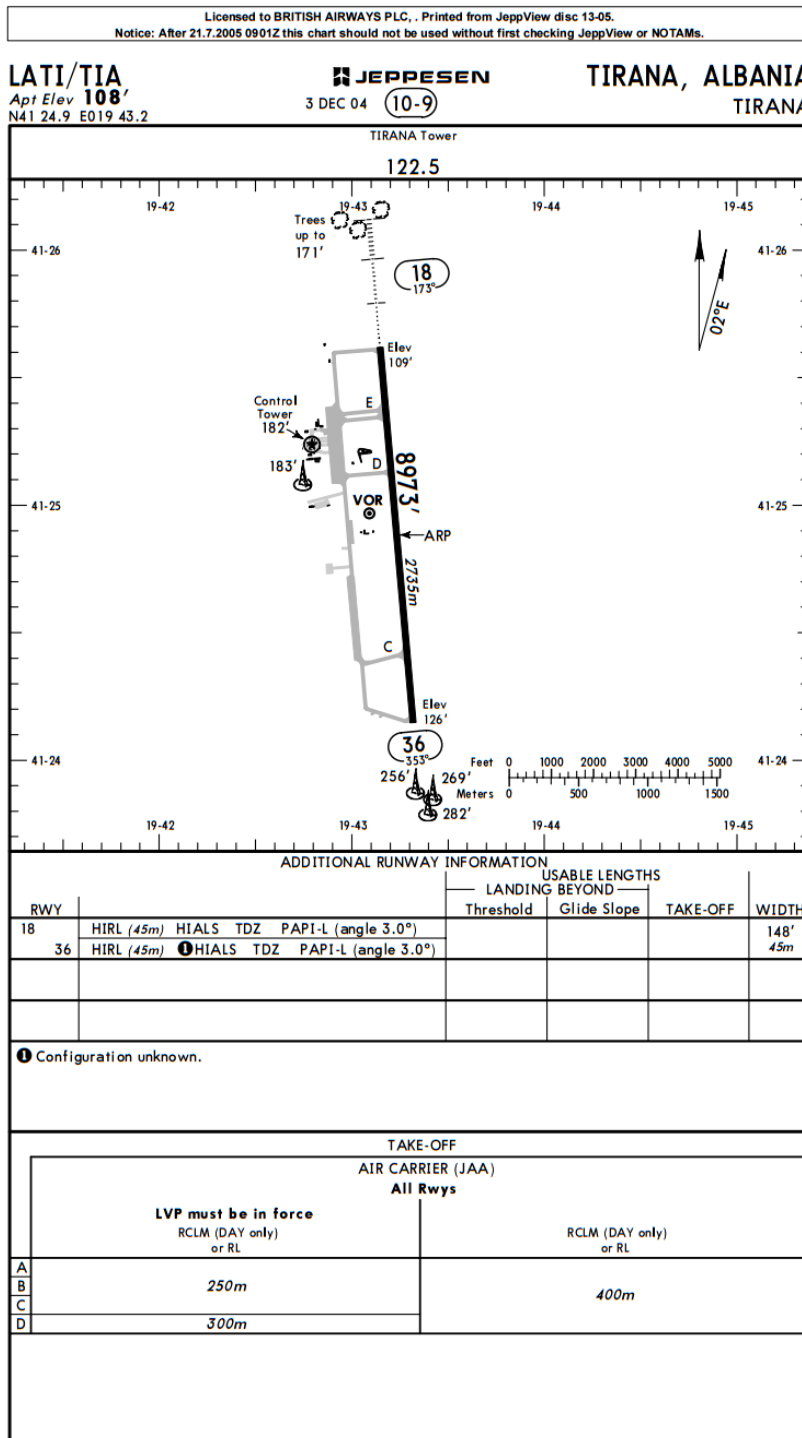


| Waypoint | Descrizione | Prua °M | Ora | Dist (nm) | Rotta °M | Rotta °T | G/S (kts) |
|----------|----------------------|---------|-----|-----------|----------|----------|-----------|
| LATI | Tirana | 357° | 0 | 0 | 000° | 000° | 110 |
| | Laguna Karavastase | 196° | 17 | 30,4 | 196° | 199° | 110 |
| LAVL | Vlora | 179° | 15 | 27,6 | 179° | 182° | 110 |
| LGKR | Ioannis Kapodistrias | 156° | 31 | 56,2 | 156° | 159° | 110 |

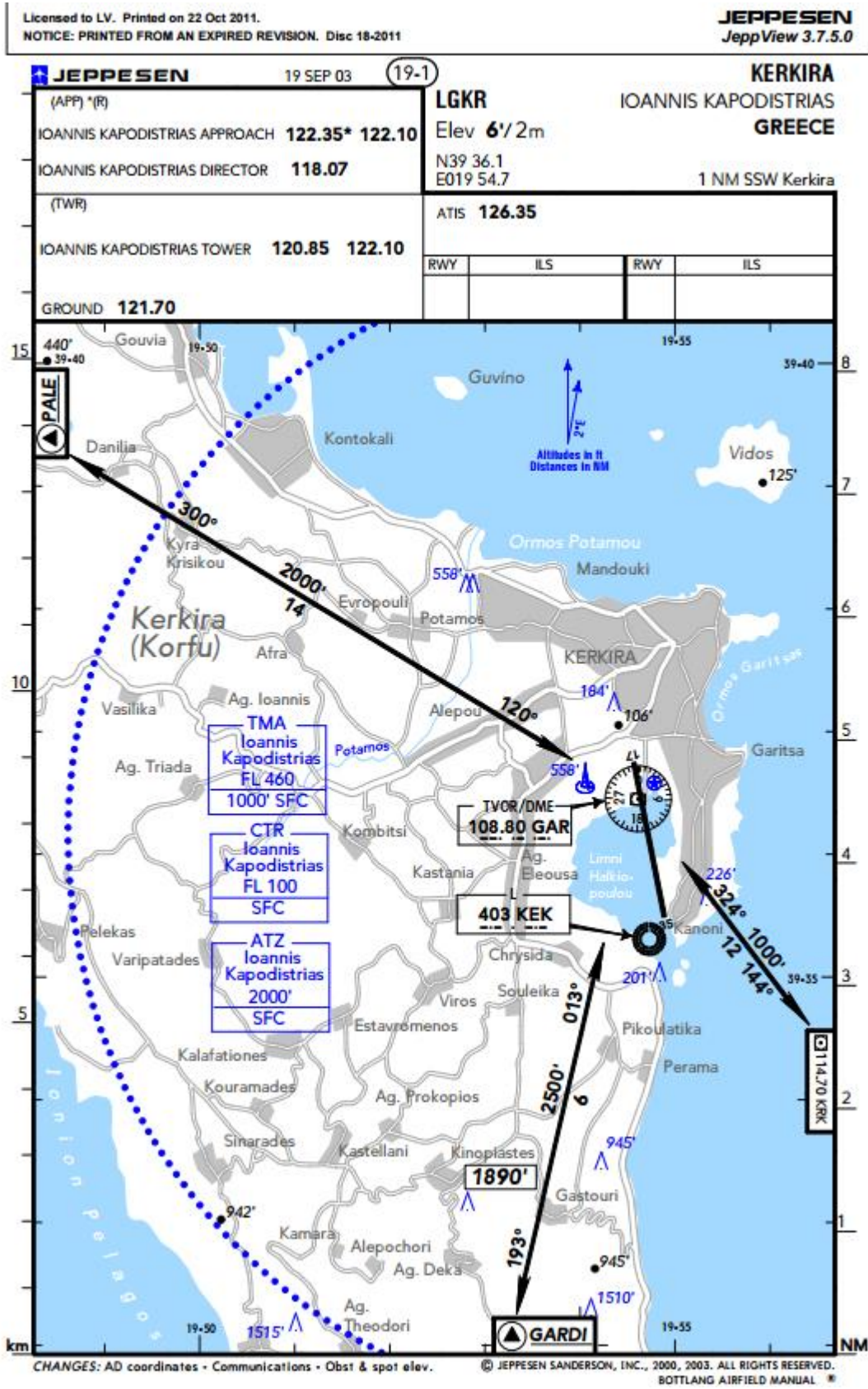
Breve descrizione del volo: Dalla Capitale dell'Albania voleremo fino in Grecia, a Ioannis Kapodistrias per l'esattezza, che si trova sulla famosa isola di Corfù.

Cartine

Podroica LYPG



Ioannis Kapodistrias LGKR



PVI GIRO AEREO D'EUROPA

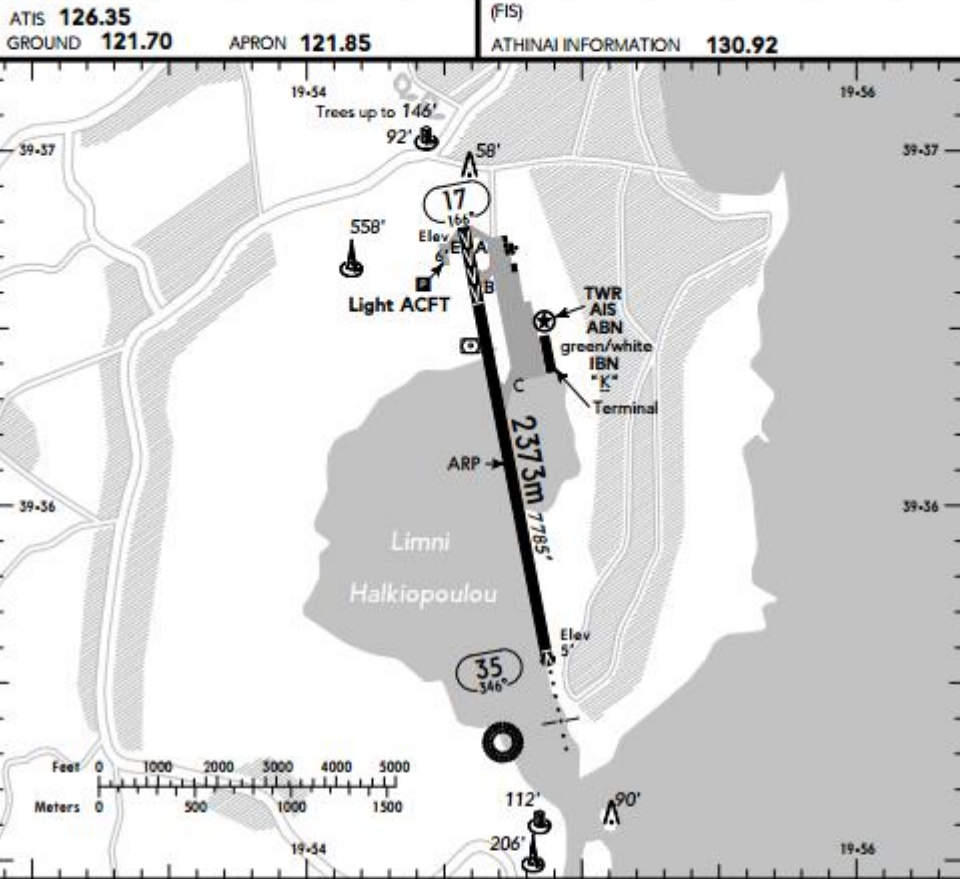
Licensed to LV. Printed on 22 Oct 2011.
 NOTICE: PRINTED FROM AN EXPIRED REVISION. Disc 18-2011

JEPPESEN
 JeppView 3.7.5.0

KERKIRA
 IOANNIS KAPODISTRIAS
 GREECE

19-2 19 SEP 03

JEPPESEN



Icons: Taxi, Bus, Taxi, TAXI

ABN - IBN - ALS 35 - PAPI 17 (3°), 35 (3.08°) - THRL - RL - TWYL - APRON - WDI - OBSTL.

| RWY No | Dimension (m) - Surface | TORA (m) | LDA (m) | Strength | Lights |
|--------|-------------------------|----------|---------|----------------|--------|
| 17 | 2373 x 45 Asphalt | 2373 | 1963 | PCN 33/F/B/X/U | ☉ |
| 35 | 2373 x 45 Asphalt | 2373 | 2314 | | |

See also KERKIRA 10-1V.
 Traffic circuit RWY 35 right hand at 1000'.
 01 APR-31 OCT: Request start-up clearance when ACFT doors are closed and when ready to start engines immediately. When the expected delay is less than 15 MIN at the holding position, ACFT will be cleared to start engines immediately.
 Birds in vicinity of AD.