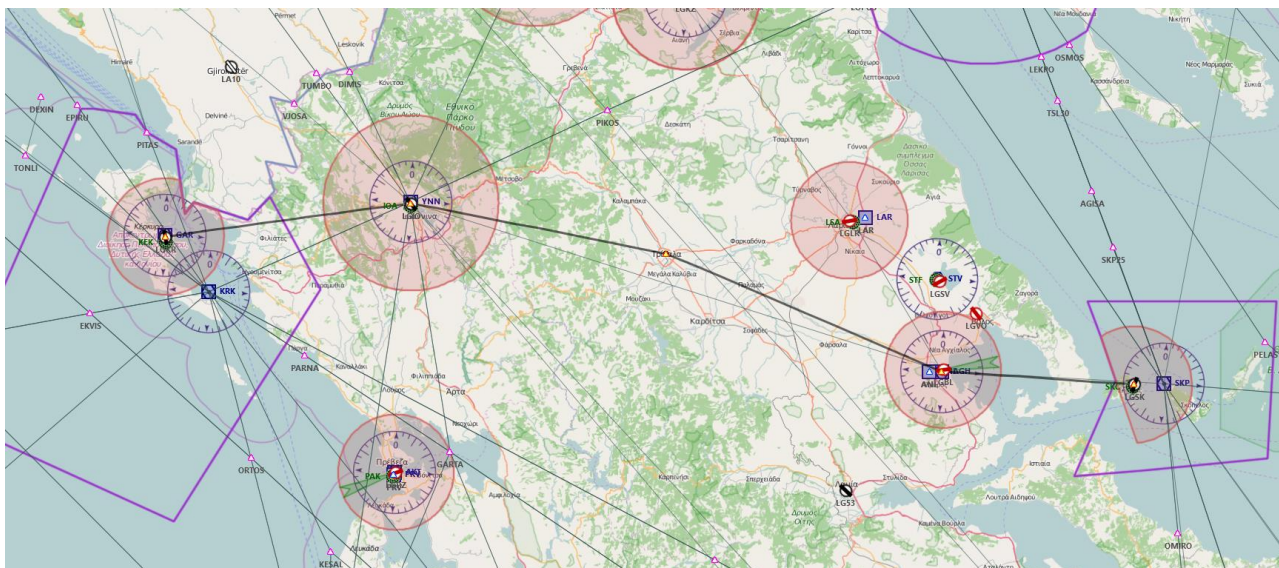


5ª TAPPA: IOANNIS KAPODISTRIAS (LGKR) – SKIATHOS (LGSK)

Piano volo:

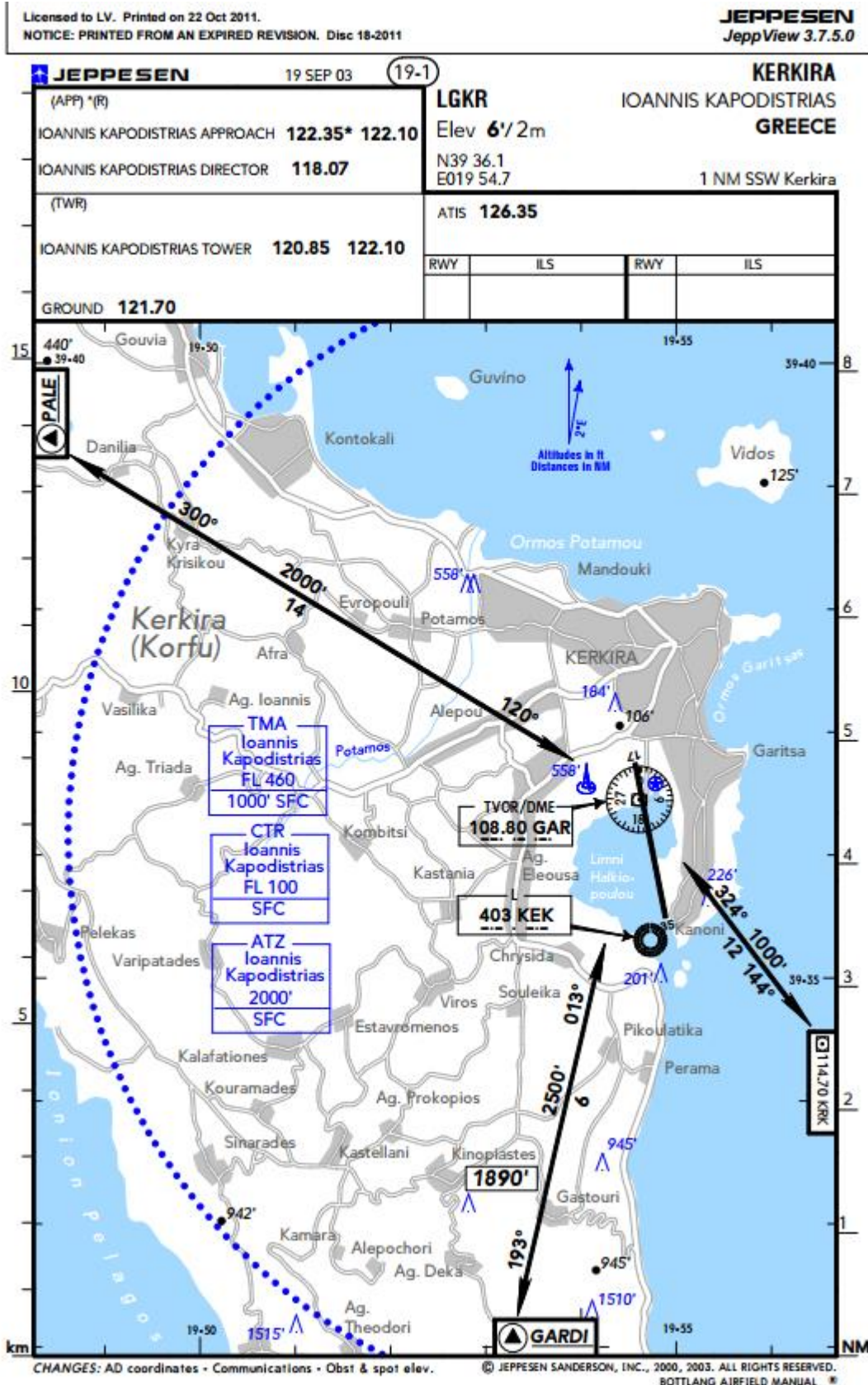


Waypoint	Descrizione	Prua °M	Ora	Dist (nm)	Rotta °M	Rotta °T	G/S (kts)
LGKR	Ioannis Kapodistrias	357°	0	0	000°	000°	110
LGIO	Ioannina	079°	23	42,4	079°	082°	110
	Trikala	099°	24	44,6	099°	101°	110
AGH	ANCHIALOS (110,4 MHz)	110°	28	51,6	110°	113°	110
LGSK	Alexandros Papadiamandis	091°	18	33,2	091°	094°	110

Breve descrizione del volo: Da Corfù voleremo nell'entroterra fino a raggiungere la costa dall'altra parte della Grecia. Atterreremo sulla famosa isola di Skiathos, quindi asciugamani e creme solari a bordo 😊

Cartine

Ioannis Kapodistrias LGKR



PVI GIRO AEREO D'EUROPA

Licensed to LV. Printed on 22 Oct 2011.
 NOTICE: PRINTED FROM AN EXPIRED REVISION. Disc 18-2011

JEPPESEN
 JeppView 3.7.5.0

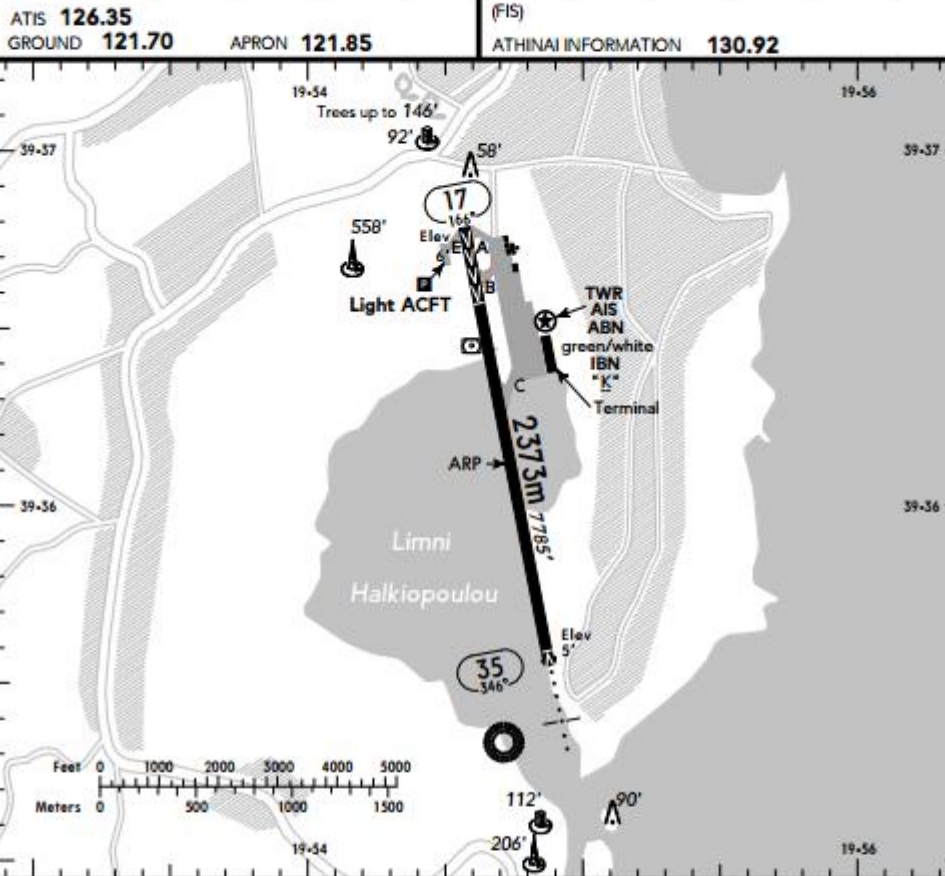
KERKIRA

19-2 19 SEP 03

JEPPESEN

IOANNIS KAPODISTRIAS

GREECE



Icons for taxi, bus, and other services.

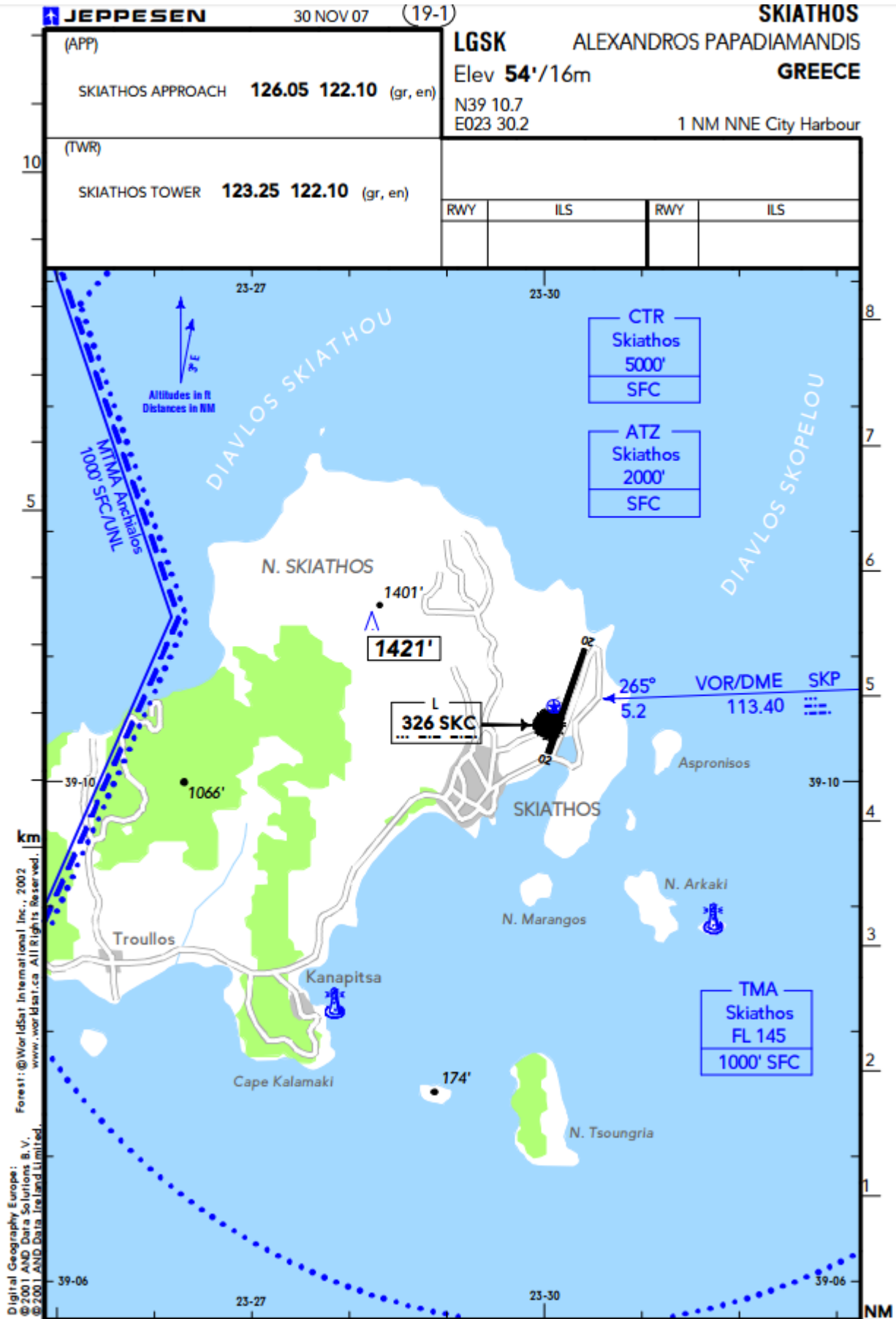
ABN - IBN - ALS 35 - PAPI 17 (3°), 35 (3.08°) - THRL - RL - TWYL - APRON - WDI - OBSTL.

RWY No	Dimension (m) - Surface	TORA (m)	LDA (m)	Strength	Lights
17	2373 x 45 Asphalt	2373	1963	PCN 33/F/B/X/U	☉
35	2373 x 45 Asphalt	2373	2314		

See also KERKIRA 10-1V.
 Traffic circuit RWY 35 right hand at 1000'.
 01 APR-31 OCT: Request start-up clearance when ACFT doors are closed and when ready to start engines immediately. When the expected delay is less than 15 MIN at the holding position, ACFT will be cleared to start engines immediately.
 Birds in vicinity of AD.

CHANGES: COM • PSN ARP • RWY • Apron for light ACFT. © JEPPESEN SANDERSON, INC., 2000, 2003. ALL RIGHTS RESERVED. BOTTLANG AIRFIELD MANUAL ®

Skiathos LGSK



SKIATHOS

(19-2) 30 NOV 07

JEPPESEN

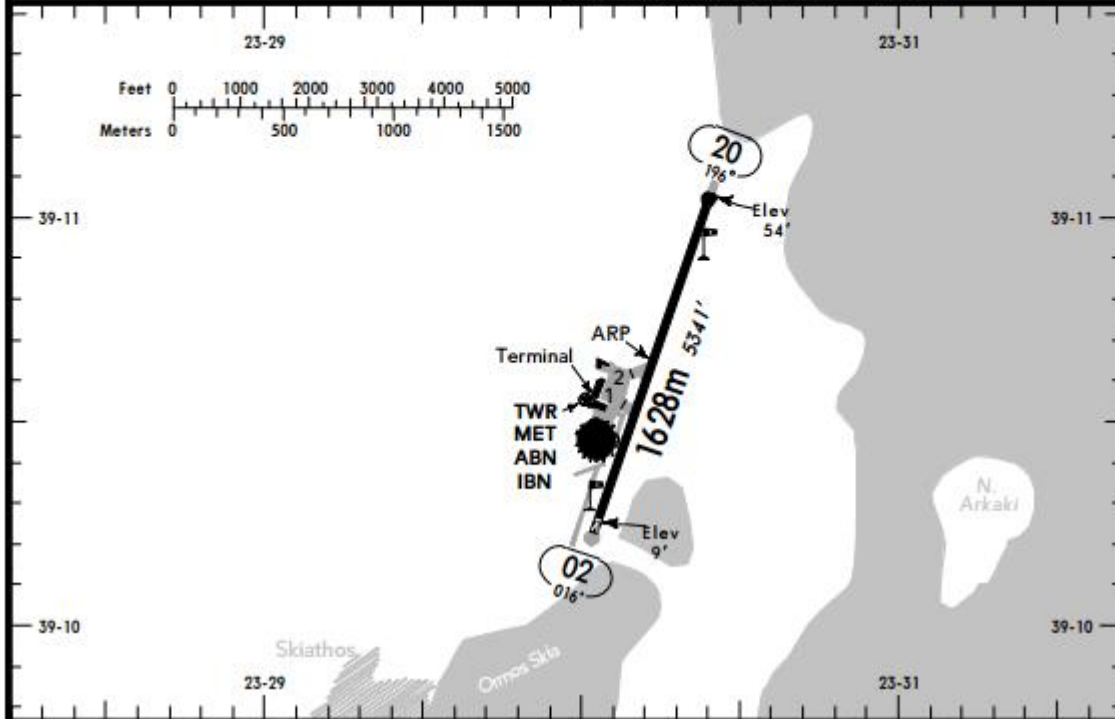
ALEXANDROS PAPADIAMANDIS

GREECE



(FIS)

MAKEDONIA INFORMATION **130.92**



ABN - IBN - PAPI 02 (3.3°), 20 (3°) - THRL - RL - TWYL - APRON - OBSTL.

RWY No	Dimension (m) - Surface	TORA (m)	LDA (m)	Strength	Lights
02	1628 x 30 Asphalt	1628	1570	PCN 42/F/D/X/U	
20		1628	1628		

Due to limited parking space PNR by phone for all private flights before departing from origin AD.
 Except of a different instruction all ACFT taxiing must make turning circle at both RWY ends.
 ACFT taxiing on turning circle at the beginning of RWY 02 must make a clockwise turn with low engine power.

Caution

ACFT should taxi with reduced power when entering or leaving apron.
 A part of THR 20 is not visible from TWR.
 Seagulls appear in the vicinity of the AD throughout the year.