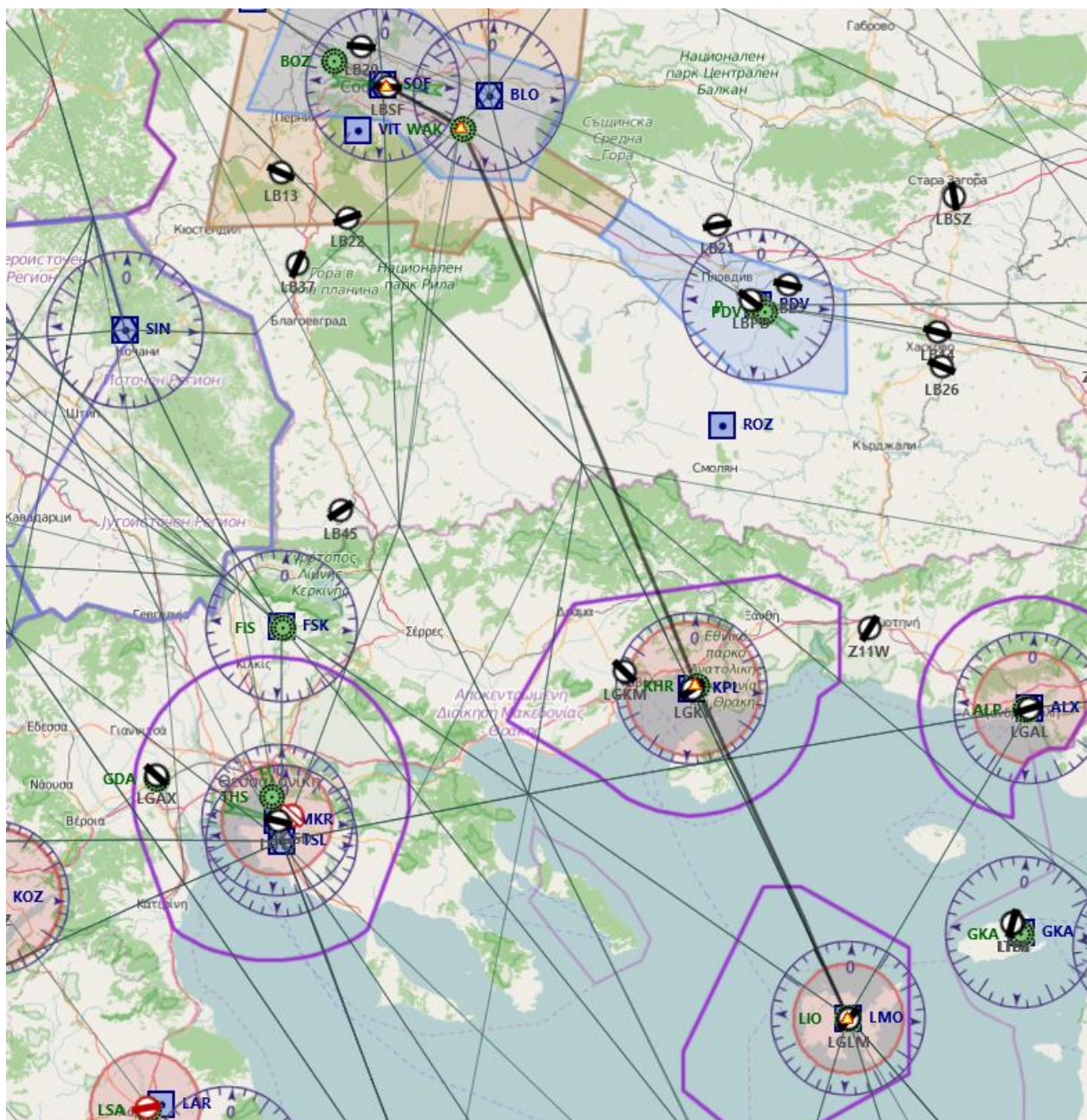


8^ TAPPA: LIMNOS (LGLM) – SOFIA (LBSF)

Piano volo:

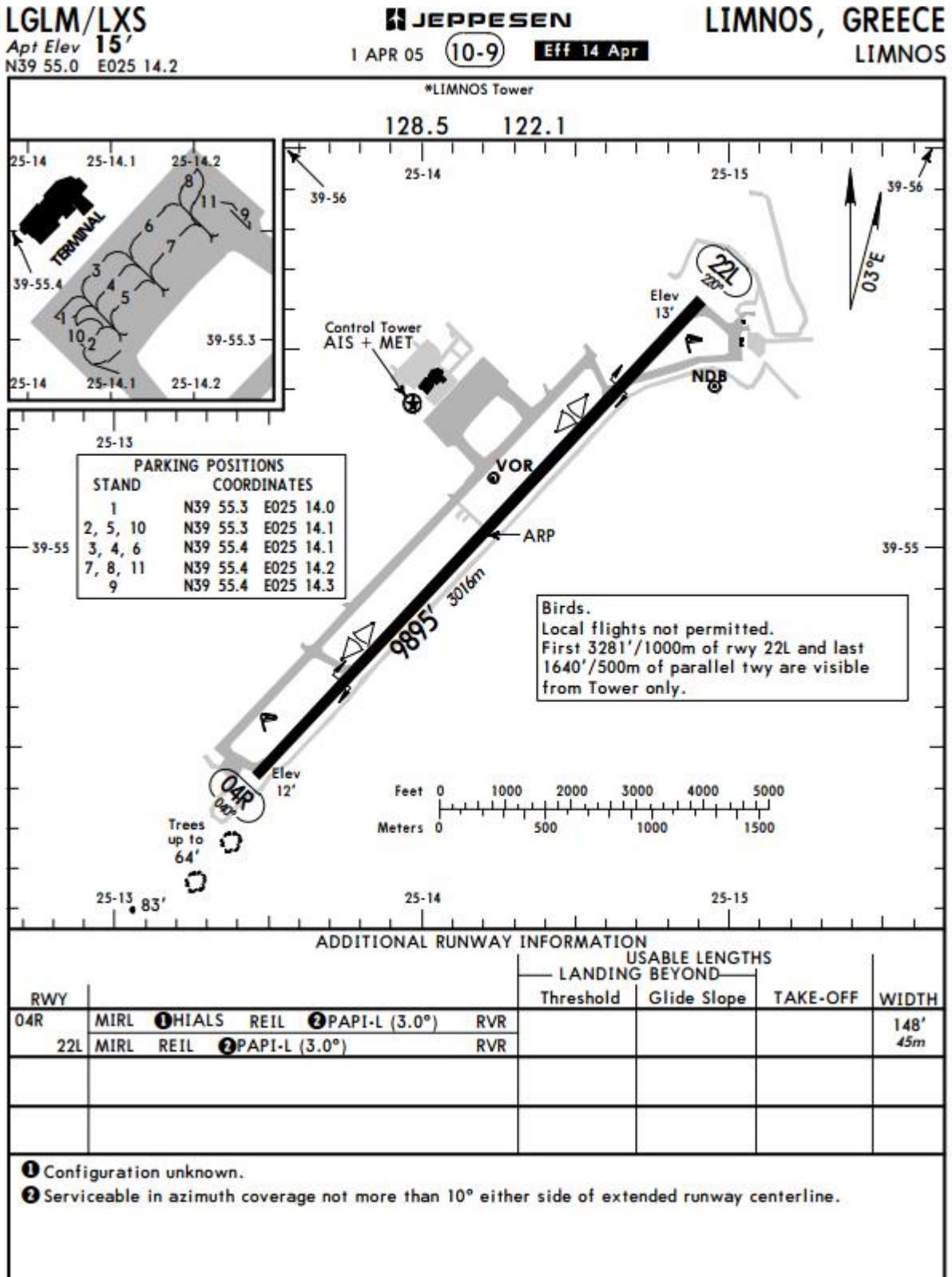


Waypoint	Descrizione	Prua °M	Ora	Dist (nm)	Rotta °M	Rotta °T	G/S (kts)
LGLM	Ifaistos	356°	0	0	000°	000°	130
KHR	KAVALA (327 KHz)	332°	31	66,5	332°	336°	130
WAK	VAKAREL (490 KHz)	334°	50	107,3	334°	338°	130
LBSF	Sofia	296°	7	14,9	296°	299°	130

Breve descrizione del volo: Ritorniamo nell'entroterra lasciandoci alle spalle il Mar Egeo per sbarcare in Bulgaria. Atterreremo nella capitale della Bulgaria: Sofia. Durata prevista del volo circa 1h30min.

Cartine

Limnos LGLM

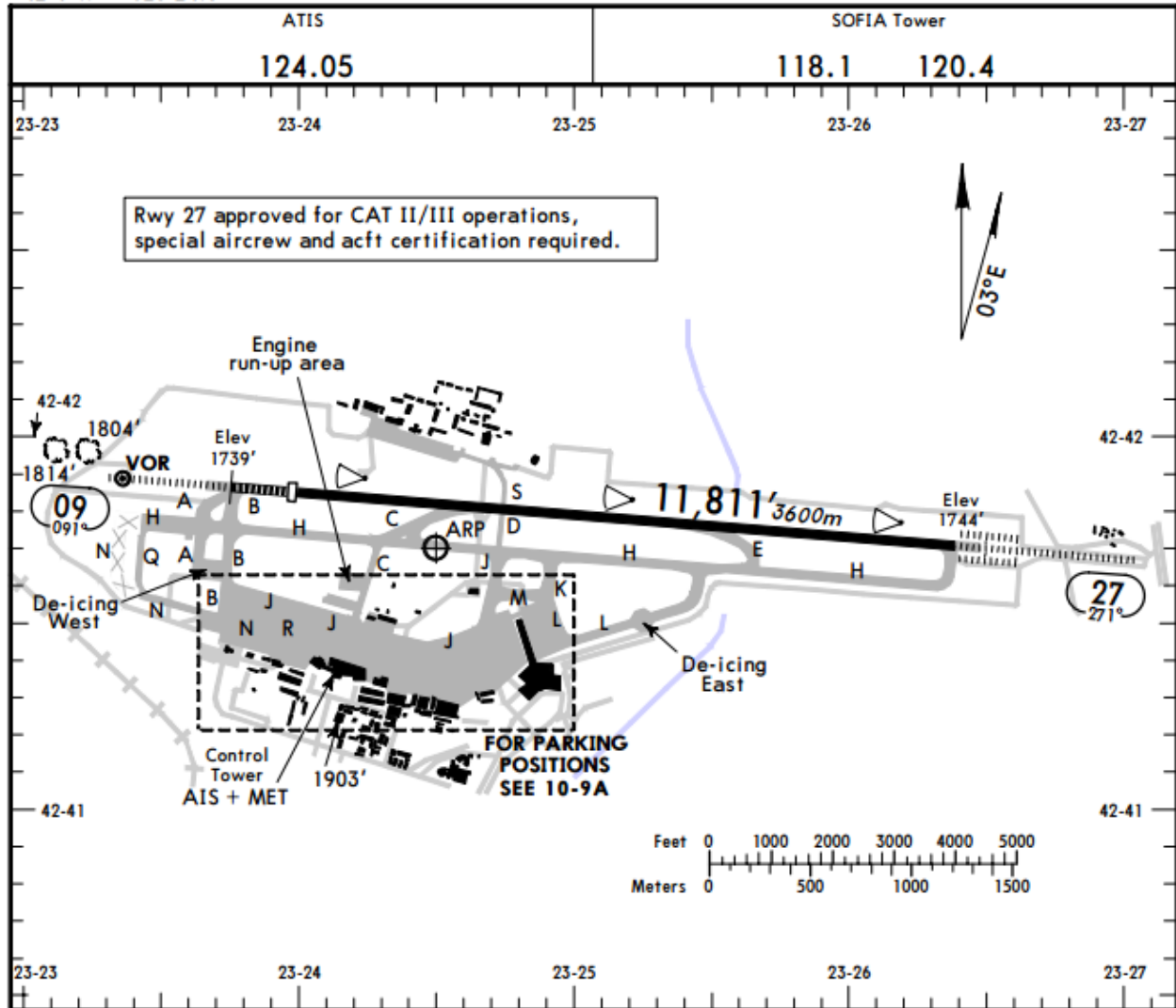


Sofia LBSF

LBSF/SOF
 Apt Elev **1742'**
 N42 41.7 E023 24.5

JEPPESEN
 14 SEP 07 **(10-9)** Eff 27 Sep

SOFIA, BULGARIA
 SOFIA



ADDITIONAL RUNWAY INFORMATION

RWY	SURFACE	CL	HIALS	PAPI-R	SLOPE	RVR	USABLE LENGTHS			WIDTH
							Threshold	Glide Slope	TAKE-OFF	
09	HIRL (60m)	CL (15m)	HIALS	PAPI-R (3.0°)		RVR	10,827' 3300m	9794' 2985m	②	148'
27	HIRL (60m)	CL (15m)	HIALS-II	SFL TDZ ①		RVR		10,717' 3267m		45m

- ① PAPI-L (3.0°)
 - ② TAKE-OFF RUN AVAILABLE
- RWY 09:
 From rwy head 11,811' (3600m)
 twy C int 8038' (2450m)